

THE FUTURE OF MUSIC



ROYAL
COLLEGE
OF MUSIC
London



PROSPECTUS
2025—2026

‘THE RCM IS AN
INCREDIBLE PLACE
FULL OF INSPIRING
PEOPLE AND
LIFE-CHANGING
OPPORTUNITIES.’

Katherine Yoon, Master of Music



TEN REASONS TO STUDY AT THE ROYAL COLLEGE OF MUSIC



01

PERFORM WITH THE FINEST

RCM students perform in venues across London and further afield with renowned conductors and artists, and composers hear their works brought to life by RCM musicians.

02

LEARN FROM THE BEST

Our dedicated and experienced professors are leaders in their fields, and many are principal players with London's major orchestras and ensembles. They are joined by distinguished visiting professors and artists from across the globe.

03

ENJOY A BEAUTIFUL CAMPUS

The College has been transformed in recent years with magnificent performance spaces, state-of-the-art accommodation, a new Museum and outstanding digital resources.

04

JOIN A GLOBAL COMMUNITY

The RCM is a truly global conservatoire with strong connections to the local community. Our students and staff come from every corner of the world to create a friendly, exciting and diverse global community of music-making.

05

PREPARE TO SUCCEED

For over 140 years, we have nurtured the world's leading musicians, encouraging them to excel. You will follow in their footsteps and become highly employable; many of our alumni have gone on to enjoy successful international careers.

06

ADVANCED DIGITAL TECHNOLOGY

Alongside our extraordinary heritage, the RCM is a world leader in digital technologies. Our recording studios, virtual learning platforms and Digital Innovation Lab, which includes a new state-of-the-art Performance Simulator, will advance your understanding and experience of the latest digital technologies.

07

GAIN PROFESSIONAL EXPERIENCE

Our dynamic Creative Careers Centre offers advice, workshops and presentations, as well as opportunities to develop entrepreneurial and business skills, to perform at prestigious events and to teach and take music into the wider community. The RCM is the only UK conservatoire with a dedicated careers centre that supports students and graduates for up to five years after graduation.

08

A PERFECT LOCATION

Situated in the heart of London and standing proudly opposite the Royal Albert Hall, the RCM's location in London's beautiful and culturally rich South Kensington is the envy of the musical world.

09

TAILOR YOUR STUDIES

We are the only UK conservatoire to develop and award our own degrees right up to doctoral level, meaning you can create a bespoke course to suit your aspirations.

10

EXPLORE AND INNOVATE

We are a world-class centre for innovation, renowned for cutting-edge research, which informs our teaching and helps you develop fully as an artist. Recognising the value of our heritage and reflecting on music history is equally important to us. You will have access to our beautiful and unique Library, new Museum and on-site collections.



CONTENTS

LIFE AT THE RCM

- 08** Welcome to the RCM
- 10** Performance Opportunities
- 14** Learning & Development
- 16** Prepare for Your Future
- 18** Our Distinguished Alumni
- 22** Our Location
- 24** Studying in London
- 26** Accommodation
- 28** Student Support
- 29** RCM Students' Union
- 30** Our Campus & Facilities
- 36** Global Opportunities
- 38** Scholarships

www.rcm.ac.uk/life

FACULTIES

- 42** Brass
- 44** Composition
- 46** Conducting
- 48** Historical Performance
- 50** Keyboard
- 52** Percussion
- 54** Strings
- 56** Woodwind
- 58** Vocal & Opera
- 60** RCM Opera Studio
- 62** RCM Professors

www.rcm.ac.uk/faculties

PROGRAMMES OF STUDY

- 74** Undergraduate Programme
- 76** Masters Programmes
- 80** Artist Diplomas
- 82** Research Degrees

www.rcm.ac.uk/courses

HOW TO APPLY

- 86** Applying & Auditions
- 88** How to Get in Touch
- 89** Visit Us
- 90** Fees & Funding

www.rcm.ac.uk/apply

WELCOME TO THE RCM

The Royal College of Music has been ranked the Global No. 1 institution for Performing Arts for the third year running and earned the inaugural top spot for Music in the QS World University Rankings by Subject. The RCM community is comprised of exceptionally talented students and staff from all around the globe who come together in an inspiring learning environment.



The musical opportunities you will discover here are breathtaking. We hold hundreds of events each year across our magnificent campus and at external venues. Two new state-of-the-art performance spaces were completed at the RCM in 2020, as well as new facilities for learning and collaboration.

Here at the RCM we will support you as an artist. You will be encouraged to develop by exploring the research behind music in practice, and our professors represent the best international talent. We are committed to nurturing you through your studies.

Our rich digital learning environment has expanded the experience of our students, who can communicate better with their professors and peers via learn.rcm, our virtual learning platform. We are also dedicated to preparing you for life after graduation.

Our Creative Careers Centre gives you access to a wealth of job opportunities and provides guidance and training in the transferable skills and digital practices that will help you build a successful career. You can access advice and support for up to five years after you graduate.

Our wonderful alumni have gone on to be successful in an extraordinary range of exciting roles since graduating from the RCM, including as classical music festival directors, conductors and principal seats in leading UK and international orchestras.

We are proud of our heritage as a conservatoire that has nurtured some of the most exceptional musical talent for over 140 years, but we also seek to push the boundaries of music as leaders in digital innovation. We know that the global partnerships that enrich life at the RCM are integral to our progress as an institution.

Our students are always at the heart of what we do, and we are committed to supporting you as you embark on your journey at the College and beyond.

Professor Colin Lawson, Director
CBE, MA (Oxon), MA, PhD, DMus,
FRCM, FRNCM, FLCM, HonRAM



PERFORMANCE OPPORTUNITIES

The Royal College of Music has an outstanding artistic programme. Performance experience is at the heart of what we offer, and you will have the chance to play in everything from masterclasses and solo and chamber recitals to orchestral concerts and fully staged operas.



RCM ENSEMBLES

The RCM Symphony Orchestra is frequently joined in a variety of repertoire by some of the world's greatest conductors and artists, while the RCM Philharmonic's Orchestral Masterworks series allows students to play the core works of the orchestral repertoire. Recent visiting artists include Martyn Brabbins, Joana Carneiro, Jessica Cottis, Ryan Bancroft, Jonathon Heyward, Sakari Oramo, Sir Antonio Pappano, Rafael Payare, Vasily Petrenko, Chloé van Soeterstède and Jac van Steen.

Our other ensembles cover a wide range of genres: contemporary music with RCM New Perspectives; historical performance with the RCM Baroque Orchestra; electronic music; and jazz and swing with the RCM Jazz Orchestra.

RCM conductors also have regular opportunities to lead rehearsals and concerts with our ensembles throughout the year. We have close relationships with all the major London orchestras, including the BBC Symphony, Philharmonia, London Philharmonic and Royal Philharmonic orchestras, as well as English National Opera and the Royal Opera House, with many offering our students side-by-side performance opportunities.

CHAMBER MUSIC

Students are actively encouraged and supported to form chamber groups to help broaden their repertoire. You can perform solo and ensemble works in our many chamber music and song series, and all students are able to apply to take part in these lunchtime and rush-hour concerts. There are also opportunities to play at celebrated venues such as Wigmore Hall, Cadogan Hall, Southbank Centre, the Royal Albert Hall's Elgar Room, Victoria and Albert Museum and local venues including St James's Piccadilly and St Mary Abbots, Kensington. Visiting ensembles, including the Brodsky Quartet and the Sacconi Quartet, provide further opportunities to play alongside professional performers.

CONCERTOS AND COMPETITIONS

The RCM runs a regular concerto competition and the winners receive showcase performances with our ensembles. Composers are also able to win the chance to have their works rehearsed and premiered by a full orchestra.

In recent years, pianist Victor Maslov played Rachmaninov's Piano Concerto no 3 at the Queen Elizabeth Hall with the RCM Symphony Orchestra, while at the RCM recent performances have included Beethoven's Piano Concerto no 4 conducted by Sakari Oramo, Saint-Saëns' Cello Concerto no 1 conducted by Vasily Petrenko, as well as Sibelius' Violin Concerto, James MacMillan's *Ninian* for clarinet and orchestra, and Liszt's Piano Concerto no 2.

Image left

Vasily Petrenko with the RCM Symphony Orchestra

Image right

Musicians performing in the Museum during the Chamber Music Festival



OPERA PRODUCTIONS

The Royal College of Music Opera Studio presents three fully staged opera performances in our Britten Theatre each year, including productions of mini-operas written by RCM composers, along with frequent opera scenes and special projects. Acclaimed directors, designers and choreographers join us, providing a professional experience within a supportive environment. We have recently staged Humperdinck's *Hansel and Gretel*, directed by Stephen Barlow; Jonathan Dove's *Flight*, directed by Jeremy Sams; and *Orpheus in the Underworld* by Offenbach, directed by Louise Bakker.

COLLABORATIONS

We run many collaborative projects each year, both across our own faculties and with external institutions. Principal players from the Chamber Orchestra of Europe visit each year to work and perform with students, with recent visitors including the Cremona String Quartet and the Fidelio Trio. Our students work with a range of new music ensembles including Explore Ensemble and The Hermes Experiment. We also have a close relationship with Abbey Road Institute music production school, with performers and composers working together on live recordings in Abbey Road Studios and Angel Studios in London.

RCM composers and musicians have created music to accompany exhibitions at the Royal Academy of Arts, the National Gallery, Kew Gardens and Head On Photo Festival in Australia. Our cutting-edge Great Exhibitionists series offers you the chance to devise your own experimental, multi-media events with full support and mentorship.

6 THE RCM IS THE PERFECT MELTING POT IN WHICH TO BECOME A HIGHLY VERSATILE MUSICIAN WHO CAN PERFORM IN ANY CONTEXT, WHILE ENABLING YOU TO PURSUE YOUR OWN PROJECTS ALONGSIDE THE MOST AMAZING, PASSIONATE PEOPLE IN COLLABORATIONS THAT WILL LAST A LIFETIME.

Oliver Lee, Bachelor of Music

OUR FESTIVALS

Every year individual faculties showcase their talent in festivals. Our Keyboard Festival features a live-streamed marathon of performances, while Super String Sunday celebrates sensational string music, and the Festival of Woodwind and Brass features musicians from across both faculties. The Festival of Percussion recently welcomed guest artist Benny Greb, and regularly hosts percussionists from the BBC Symphony Orchestra, London Philharmonic Orchestra and the Orchestra of the Royal Opera House.

Further festivals focusing on individual instruments include the Guitar Festival, which has featured performances by John Williams and Craig Ogden, the Double Bass Festival, and festivals showcasing viols, recorders and the harpsichord. We also spotlight the work of a major composer each year, our most recent being Jō Kondō whose music has featured in a series of concerts.

Our FestivALL gives students the opportunity to celebrate and perform music by underrepresented composers. The repertoire for FestivALL is proposed and chosen by students and has included music by Grażyna Bacewicz and Louise Farrenc, and by RCM alumni Samuel Coleridge-Taylor, Ruth Gipps, Hannah Kendall and Elizabeth Maconchy.

Image right

Saxophonist performing at Chamber Music Festival



WATCH

www.rcm.ac.uk/watchperformance

FIND OUT MORE

www.rcm.ac.uk/performance



LEARNING & DEVELOPMENT

Our priority is supporting you to reach your full potential as a musician, ensuring you have the resources you need to succeed in a healthy, fulfilling and sustainable career. Our students work in a dynamic environment that reflects the breadth and vitality of the music profession.

Dr Diana Salazar, Director of Programmes

TEACHING AT THE RCM

We offer an individualised approach, selecting the most suitable projects and performance opportunities for each student. Flexible programmes allow you to shape your studies according to your strengths, interests and aspirations. Your learning will combine intensive one-to-one tuition with faculty group classes, rehearsals, performances, seminars, tutorials, supervision and practical workshops. We also offer international online masterclasses and Global Conservatoire courses, delivered in collaboration with our international partners.

LEARNING THROUGH RESEARCH

At the RCM you will be part of a thriving research culture that promotes artistic innovation, exploration and self-reflection, with mentorship and support from professors and staff who are at the forefront of their disciplines. Whether exploring technical challenges in your one-to-one lessons, experimenting in the practice room, discovering digital music-making, investigating performance science and education, rehearsing for your next performance or finding new repertoire in the magnificent RCM Library, research is a vital part of your learning.

Image right

Lang Lang giving a masterclass

RESOURCES AND COLLECTIONS

The new RCM Museum and the RCM Library hold outstanding collections of priceless musical instruments, famous composers' manuscripts and thousands of paintings and historical documents. The new Wolfson Centre in Music & Material Culture provides access to the RCM collections for research on campus, and many items are available for study online.

These resources are complemented by our stunning performance spaces and facilities for audio and video recording, super-fast video conferencing, technology-enhanced composition and our surround sound composition lab. The Centre for Performance Science, a collaboration with Imperial College London, offers world-class research opportunities and expertise.

COMMUNITY AND BELONGING

The College is committed to providing an inclusive learning environment. Through our widening participation initiatives we aim to ensure that anyone with musical talent has an opportunity to join our supportive international community of musicians.

We want each and every RCM student to feel a sense of belonging while studying with us, so we actively involve students in enhancing our curriculum. It is also important to us that our artistic programme and visiting artists reflect the diversity of today's music profession and our wider society. Our goal is to provide the right tuition, resources and environment so that you thrive as a unique individual during your studies with us and as you start your career.

FIND OUT MORE

www.rcm.ac.uk/learning

THE RCM IS AN EXTREMELY SUPPORTIVE ENVIRONMENT IN ALL DIMENSIONS, FROM STAFF TO STUDENTS. THE FLEXIBILITY AND VARIETY OF STUDY OPTIONS GIVE STUDENTS OPPORTUNITIES TO DISCOVER WHAT'S BEST FOR THEM.

Stone Tung, Bachelor of Music (Hons)



PREPARE FOR YOUR FUTURE

The Royal College of Music will help you to prepare for a successful future in the profession of your choice. Our fantastic careers service, staff and professors can provide you with expert guidance.

“HAVING THE OPPORTUNITY TO LEARN AND WORK CLOSELY WITH PROFESSIONALS HAS ALLOWED ME TO HAVE AN INSIGHT INTO THE PROFESSION, ALL WHILE STILL BEING A STUDENT, AND TO HAVE A STRONG IDEA OF HOW MY FUTURE CAREER COULD LOOK ONCE I GRADUATE FROM THE RCM.”

Kara Battley, Master of Performance

MAKE INDUSTRY CONTACTS

London is the centre of the UK's classical music industry, and the RCM is at the heart of an extraordinary professional network. You will find many opportunities to network and make contacts.

RCM ACCELERATE

RCM Accelerate supports graduating students to launch a new creative project, social enterprise or business idea. The scheme, which started in 2021, aims to promote proactivity, creativity and entrepreneurship.



PARTNERSHIPS WITH THE MUSIC PROFESSION

Orchestral musicians can benefit from sit-in schemes with major London orchestras, including the BBC Symphony, London Symphony, Royal Philharmonic Orchestra and Philharmonia orchestras. Composers can participate in innovative collaborative projects and hear their works performed in some of London's most prestigious venues. These schemes offer selected students the chance to sit in on rehearsals and gain invaluable experience in professional environments.

DEVELOP YOUR CAREER

The RCM is a world leader in career development for musicians and is home to the RCM Creative Careers Centre. We emphasise the need for students to be confident and versatile communicators, not just in their professional engagements, but in everything they do. Our dedicated team will help you to develop professionally by advising and guiding you through a range of opportunities that mirror the professional world. We encourage you to use your initiative to ensure that you make the most of the opportunities available to you.

Grammy Award-winning composer and conductor Eric Whitacre is an Ambassador for RCM's Creative Careers Centre. Eric offers in-person and online careers events for RCM students and graduates focusing on the topics of entrepreneurship, innovation and self-promotion.

THE CREATIVE CAREERS CENTRE OFFERS:

- Extensive professional opportunities in and around London, and beyond
- Tailored one-to-one career sessions with members of the team and industry specialists
- Lectures, seminars and resources on how to build a successful career
- Guidance on self-management and self-employment, including finance
- Careers workshops and special events
- Popular weekly e-bulletins about new opportunities
- Teaching opportunities through the RCM Teaching Service, which matches members of the public with student tutors in London and across the globe

We advise you to use these services from day one of your course to develop your knowledge and skills, to complement an outstanding CV and wealth of experience that will help shape your future career. The Creative Careers Centre provides advice and services to RCM alumni for five years after graduation.

BUSINESS MODULES

There are modules available in our undergraduate and postgraduate programmes that help you to devise and implement projects within professional settings. You can learn how to strategically develop creative ideas and marketing materials, and gain essential entrepreneurial, business and networking skills.

EDUCATION EXPERIENCE

Our pioneering learning and participation programme, RCM Sparks, provides exciting opportunities to:

- Take part in specially tailored music education training
- Work as a mentor or assistant in a range of educational settings, such as our local Music Hub, children's centres, schools, charities and renowned arts or heritage organisations
- Experience working with a wide range of ages including babies, children, families and adults
- Harness the expertise of a wide range of inspiring professionals such as esteemed workshop leaders and composers
- Experiment and learn with the support of the experienced RCM Sparks team
- Make useful contacts in the education sector to pave the way for future employment opportunities
- Share ideas and passions with other musicians and the wider community

MUSIC LEADERSHIP MODULES

There are modules available in our undergraduate and postgraduate programmes which help you grow as a music leader. You will learn about music education in a variety of settings as well as developing skills in planning creative workshops and projects.

Image left

Composer Eric Whitacre engages with students as an Ambassador for the RCM's Creative Careers Centre

FIND OUT MORE

www.rcm.ac.uk/creativecareers

OUR DISTINGUISHED ALUMNI

For more than 140 years the Royal College of Music has welcomed, trained and nurtured the musicians of the future.

Image below

Dame Sarah Connolly giving a masterclass in the Britten Theatre

Sir Thomas Allen baritone
Sophie Bevan soprano
Benjamin Britten composer
Natalie Clein cellist
Samuel Coleridge-Taylor composer
Dame Sarah Connolly mezzo soprano
Sir Colin Davis conductor
Amy Dickson saxophonist
Barry Douglas pianist
Gerald Finley baritone
Sir James Galway flautist
Gustav Holst composer
Alina Ibragimova violinist

Jonathan Lemalu bass baritone
John Lill pianist
Anna Meredith composer
Howard Shelley pianist and conductor
Dame Joan Sutherland soprano
Thomas Trotter organist
Mark-Anthony Turnage composer
Vasko Vassilev violinist
Jane Watts organist
Julian Lloyd Webber cellist
Dame Gillian Weir organist
John Williams guitarist
Ralph Vaughan Williams composer





JONATHAN LEMALU

GradDip, 2002

Bass

- I look back with deep gratitude and pride at the formative education I received at the Royal College of Music. The evolving expectations of what artists must be capable of to excel in this industry are high, and that sense of excitement and opportunity to achieve is palpable within these walls. The Britten Theatre was my playground and each time I return to teach, assess and direct I am reminded of how enjoyable and empowering a creative space it was to hone my craft alongside lifelong mentors and like-minded friends. Recent College highlights include an FRCM and appointment as Vocal Studies professor, both recognition of not only my achievements but also the important role the RCM has played in them. Coming full circle, I am excited to inspire and empower other young artists here •



SOPHIA ELGER

MPerf, 2023

Saxophonist

- My experience at the RCM was a highly positive one. I was constantly participating in projects, performances and masterclasses, which were essential to my development as a musician. I made wonderful friendships and was very fortunate in having such a dedicated and supportive professor. The saxophone department was like a family (one that I still feel a part of) and the Woodwind Faculty an extended family. My most memorable experience at the RCM was performing Ibert's *Concertino da Camera* with the RCM Symphony Orchestra. Highlights since graduating include taking part in the London Sinfonietta Academy, forming The Tondo Duo with guitarist Declan Hickey, and performing Sally Beamish's Saxophone Concerto no 2 with the Sirius Orchestra •



SACCONI QUARTET

Ben Hancox, Hannah Dawson, Robin Ashwell, Cara Berridge
String Quartet

- We formed our quartet “officially” at the RCM in September 2001. We had been playing together already, for external engagements, and we knew we had a great chemistry, musically and personally. At the end of our first year together, we won the Intercollegiate String Quartet Prize, and that really set us off on this wonderful and crazy path that we’re still navigating. As RCM Quartet in Association, we run a chamber ensemble project each year, performing once in College and then again shortly afterwards in our own festival in Folkestone. Working with RCM string players is a great pleasure and often a very moving experience, and these concerts have been some of the most thrilling and rewarding of our career.



ANDREW GOURLAY

MPerf, 2007
Conductor

- I feel truly proud to have been a student at the RCM. It’s such a high-quality institution and inhabits a special place in London. Walking out to the Royal Albert Hall always put a smile on my face. Now when I come to conduct at the Proms the reverse happens – I see the RCM and it makes me feel happy and confident. All my teachers, within both conducting and brass departments, were of the highest level and I couldn’t have hoped for more. In my first month at the RCM I played in Bruckner 9 under Bernard Haitink and the College even organised some lessons with Haitink. I also assisted on *The Marriage of Figaro*. These experiences were massive confidence-builders that placed me only one step away from the profession, setting me up perfectly for my conducting career.

JOLENE KHOR

MMus, 2021
Composer for screen

- The best part of my RCM learning experience was working with other musicians and recording my compositions, which helped develop my skills as a composer for screen. I wouldn’t previously have had the confidence to host my own recording session, but now I’ve published my works and recorded them with orchestras. This is all thanks to my wonderful professors, who taught me so much – I wouldn’t be where I am today without their help. I work on games and films with studios and companies such as High Rollers DnD, ZM Films, Nomnivore Games, The Storyteller Squad, The Writer’s Room: 7th Sea, and The Gods Fabled: Soil Frontier. I’ve been nominated for and won a few awards since graduating, including the Cannes World Film Festival and Best Music Composer at the Tokyo Film Awards. I conducted at the Netflix Queen Charlotte Orchestra pop-up concert in 2023, and have recorded with the Budapest Scoring Orchestra, all while working as a part-time teacher, music arranger and producer.



ALIM BEISEMBAYEV

ArtDip, 2023
Pianist

- The Royal College of Music is a very special place to me. It is where I first heard masterclasses given by incredible musicians such as Sir András Schiff and Maxim Vengerov – they were nothing short of inspiring. The RCM’s prestigious and illustrious Keyboard Faculty, and the chance to study with Professor Vanessa Latache, were among the reasons I wanted to attend. I completed my Masters and Artist Diploma in Performance in 2023, by which time my career was already developing thanks to winning the Leeds Piano Competition. It led to performances at Wigmore Hall and in South Korea, Germany, France, Spain, Poland and Kazakhstan. I also had the pleasure of performing with the RCM Symphony Orchestra and Sir Antonio Pappano in January 2022. At the 2023 BBC Proms I was asked at the last moment to perform Rachmaninov’s Piano Concerto no 2 – the RCM had prepared me mentally and musically to be ready to say yes to such an opportunity •



EMILY SIERRA

BMus(Hons), 2020
Mezzo soprano

- My experience at the RCM was unforgettable – the moment I walked through the foyer, I felt like I was home. Being in London allowed me to sing in the same spaces as my favourite opera singers, which helped me imagine my future in this industry. The most memorable experience was singing for HM King Charles, then Prince Charles, after receiving the President’s Award. It was surreal, and I felt so loved and supported by everyone at the College. Everything I experienced at the RCM prepared me for life as an opera singer. It was instilled in me to sing with my authentic voice. I am now at the Bayerische Staatsoper in Munich and am looking forward to travelling the world singing roles I love •



ANDRÉS VILLALOBOS LÉPİZ

BMus(Hons) and MMus, 2019 and 2021
Historical oboist

- At the RCM I was encouraged to become the best musician I could be, and my teachers gave me the tools to improve my musicianship. I owe a great deal to them, and would not have reached where I am in my career had it not been for all the wonderful opportunities and experiences they gave me. My most memorable experience at College was touring and performing abroad, developing the skills to play to a high standard in a new environment. My career highlights include touring Bach’s St Matthew Passion, performing at the BBC Proms, and appearing on BBC Radio 3, as well as engagements with many period instrument orchestras. Thank you, RCM, for helping me so much •

OUR LOCATION

The Royal College of Music's location is the envy of the musical world. We are situated directly opposite the Royal Albert Hall in one of London's most attractive and vibrant areas – South Kensington.

THE LOCATION OF THE RCM IS STUNNING AND BEING ABLE TO PRACTISE WITH VIEWS OF THE ROYAL ALBERT HALL IS TRULY A UNIQUE EXPERIENCE.

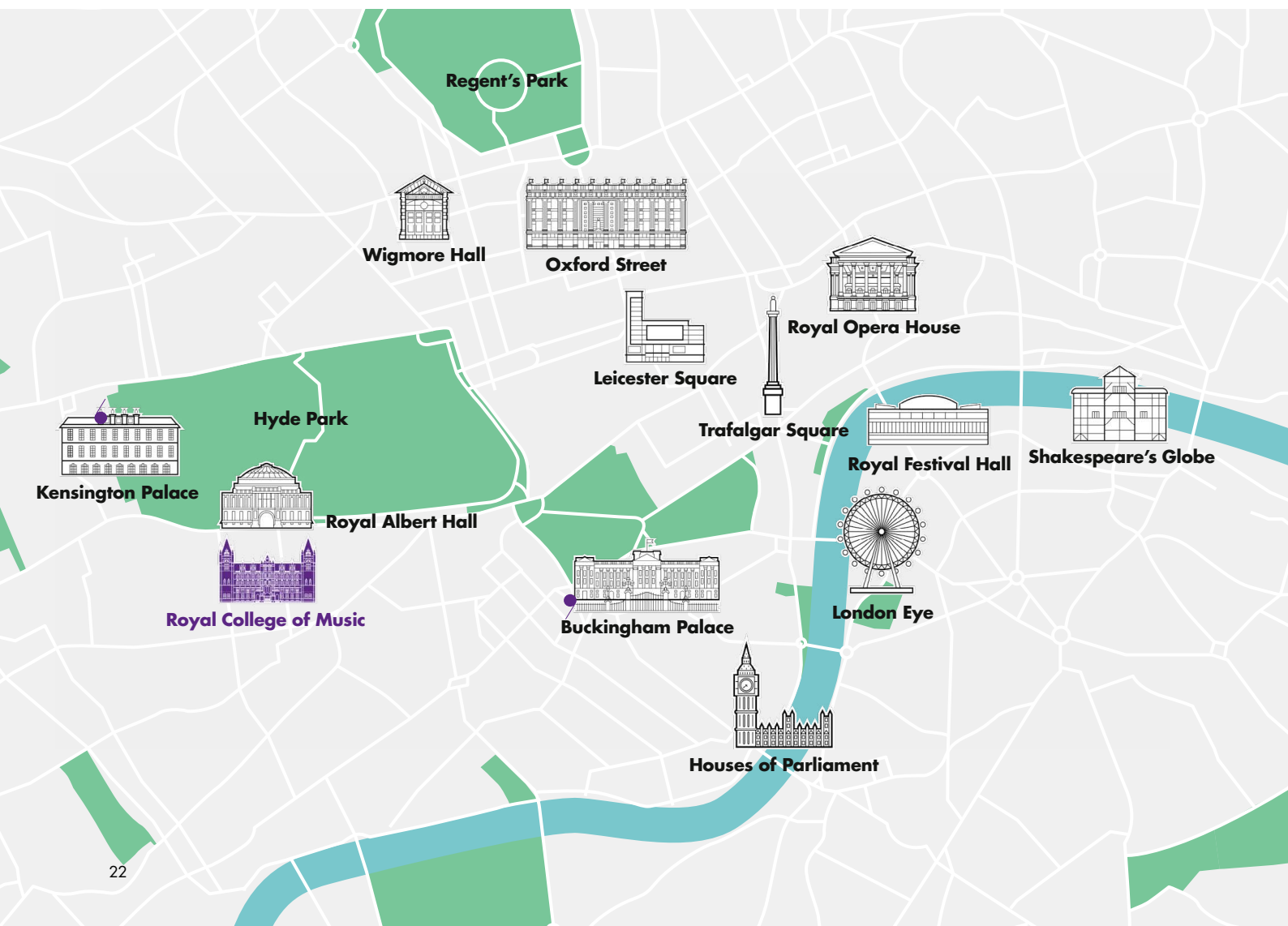
Isabel Garcia, Bachelor of Music (Hons)

FIND OUT MORE

www.rcm.ac.uk/location

Image right

RCM students in Kensington Gardens



The RCM sits at the heart of the Exhibition Road Cultural Quarter, London's premier hub for arts and culture. The College is just a ten-minute walk from South Kensington tube station with several bus routes passing close by, making it easy to explore all of London. Within a short walk you can find:

IMPERIAL COLLEGE LONDON

Our close association with neighbouring Imperial College means you can be part of one of the largest and most active student bodies in the capital.

ROYAL ALBERT HALL

This world-famous venue is the home of the BBC Proms and also hosts major concerts and film premieres.

HYDE PARK

Generations of RCM students have enjoyed the quiet of this renowned park, which is one of the most attractive green spaces in London.

WORLD-LEADING MUSEUMS

We enjoy close relationships with three of the UK's biggest museums: the Natural History Museum, Science Museum and Victoria and Albert Museum, which offer inspiration and performance opportunities.

ROYAL COLLEGE OF ART

Students can take advantage of amazing collaborations and partnerships with our artistic neighbours.

CULTURAL INSTITUTIONS

You will be able to explore a diverse range of cultural programmes with other nearby institutions, including the Goethe-Institut, Austrian Cultural Forum, Institut français and Ismaili Centre. There are also great places to eat and socialise with friends. For more details visit www.discoversouthken.com



STUDYING IN LONDON

London is one of the world's leading cultural capitals. Studying at the Royal College of Music offers an amazing array of opportunities.

The RCM has links with many of the major venues across the city, including the Royal Festival Hall, the Royal Albert Hall's Elgar Room, Kings Place, Queen Elizabeth Hall, St Martin-in-the-Fields and St James's Piccadilly. Students also have the opportunity to play at other churches, museums and galleries, such as the Royal Academy of Arts and the Victoria and Albert Museum.

In addition to hosting the finest international musicians and orchestras, London offers world-class theatre, dance, film and television. It has a host of museums and art galleries, many of which are free to visit, and wonderful green spaces. As a student you will be entitled to discounted tickets and travel, so you can really make the most of your time in the capital.

STUDYING IN THE HEART OF LONDON HAD ALWAYS BEEN A DREAM AND THE VIBRANT SURROUNDINGS OF SOUTH KENSINGTON ARE UNMATCHED IN TERMS OF CULTURAL OFFERINGS FOR THE ARTS AND SCIENCES. IT IS INSPIRING TO BE SURROUNDED BY SUCH HISTORY; PRACTISING IN ROOMS OVERLOOKING THE ROYAL ALBERT HALL IS SUCH A PRIVILEGE AND HUGELY MOTIVATES ME TO KEEP CHASING MY CAREER GOALS.

Issy Haley-Porteous, Master of Performance

Image right

Students by the Houses
of Parliament





ACCOMMODATION

The Royal College of Music has its own dedicated Hall of Residence, Prince Consort Village (PCV), which provides high-quality, contemporary accommodation for more than 400 students. Situated on Goldhawk Road in West London, it has studio apartments, en-suite rooms and standard rooms.

FACILITIES

Finding good accommodation can be challenging and we are delighted that we have our own Hall of Residence, Prince Consort Village, specially designed for RCM students, which takes the stress out of finding somewhere to live. The accommodation includes acoustically treated bedrooms allowing you to practise at home. Amenities include: 23 dedicated practice rooms available 24/7; a film room; open mic space; high-speed Wi-Fi; laundry; reception and gym facilities; bicycle storage; and indoor and outdoor communal spaces to meet fellow students and make friends.

The accommodation is managed 24 hours a day. The in-house team and residence manager are dedicated to the pastoral care and wellbeing of residents.

LOCATION

Prince Consort Village is within easy reach of the RCM by London Underground from Ravenscourt Park to South Kensington, or by bus or bicycle.

This ideal location offers both the greenery of nearby Ravenscourt Park as well as many local shops, cafés and amenities.

Westfield London, Shepherd's Bush is also nearby and is home to leading fashion, home and lifestyle stores, as well as cinemas and a huge range of restaurants. Notting Hill, famous for the Notting Hill Carnival and Portobello Road Market, is only a short bus ride away.



Image left

Students in a shared kitchen at Prince Consort Village

Image right

An RCM student practising in a studio apartment



WATCH

www.rcm.ac.uk/watchpcv

FIND OUT MORE

www.rcm.ac.uk/accommodation

♫ LIVING AT PCV IS IDEAL FOR YOUR FIRST YEAR OF STUDY. THE FACILITIES ARE GREAT, THE PRACTICE ROOMS ARE OPEN 24/7 AND YOU'RE IN THE BEST PLACE TO MEET OTHER RCM STUDENTS. ♪

Tia Radix-Callixte, Bachelor of Music (Hons)



STUDENT SUPPORT

The Royal College of Music provides easy access to a whole range of services to support you during your time here, from counselling to advice on finances and health and wellbeing.

The College takes pride in being an inclusive place to study. We actively support equality and diversity within our student community and beyond the walls of the College. We offer a range of teaching opportunities, activities and resources to support student health and wellbeing during your studies. Students can get advice on assessments, administrative matters, volunteering and performance opportunities across London. Students can speak with their faculty administrator in person, both on campus and virtually.

STUDENT SERVICES

Our experienced and supportive Student Services Team offers a confidential and impartial advice service to all students, in person and online, dealing with a range of issues including financial concerns, private accommodation, musicians' injuries, personal matters and more. They also provide a range of print and online resources on a wide variety of topics.

STUDENTS WITH DISABILITIES

We welcome and encourage the participation of students with disabilities in all aspects of life at the RCM. Students can discuss any learning support requirements they might have due to a disability or health issue and seek advice on Disabled Students Allowances via Student Services. To find out more visit www.rcm.ac.uk/disabilities

“YOUR WELLBEING IS ALWAYS THE TOP PRIORITY HERE. THERE’S A FRIENDLY AND SUPPORTIVE ATMOSPHERE AROUND THE COLLEGE AND THERE ARE ALWAYS PEOPLE TO TALK TO ABOUT ANY CHALLENGES OR CONCERNS YOU MAY HAVE.”

Rhodri Thomas, Master of Performance

HEALTH AND WELLBEING

The RCM Counselling service offers confidential counselling to students, and we are also partnered with Togetherall, which runs a 24/7 online service providing advice and support for those dealing with depression, anxiety and other mental health issues. The Imperial College Health Centre provides primary care medical services and has its own counselling service.

The Imperial College Chaplaincy Centre also welcomes all RCM students, and provides a place of resource, help, advice and information relating to faith and spirituality.

We are a member of the Healthy Conservatoires Network and there is a strong tradition of Alexander Technique at the RCM, which is popular with many students. Find out more at www.rcm.ac.uk/alexandertechnique. We also offer free yoga and meditation sessions and massage therapy at a low cost to ensure you can perform to your best ability.

INTERNATIONAL STUDENTS

We proudly welcome international students from all over the world and understand that moving to a new country can be a big step. Our Registry and Student Services staff provide advice and support for international students about visas and immigration, finances and opening bank accounts, accommodation, or just how to make the most of your time here.

**CONTACT
STUDENT SERVICES
FOR A CONFIDENTIAL
DISCUSSION**

studentservices@rcm.ac.uk
020 7591 4316

RCM STUDENTS' UNION

The RCM Students' Union (SU) will represent and support you as you discover all the incredible opportunities the Royal College of Music and London have to offer.

The Students' Union is a lively student body that includes every student enrolled at the RCM and advocates for students at all levels. The SU also provides regular feedback to the College on every aspect of student life, from courses to facilities, ensuring your time here is as fulfilling as it can be.

Mental and physical wellbeing is a priority to the SU, which works closely with Student Services to ensure the correct support is available for every student.

Students are encouraged to get involved with decision making at the RCM. Every year the SU holds elections for the President and Officers of the SU Executive Committee, as well as Faculty Representatives.

Our new Café, the Cotes-Burgan Atrium and the 1851 Courtyard are popular areas for socialising for our students. The BaRCM is the central social hub within the College. It has a bar, stage and pool table so is ideal for socialising with friends, getting to know other students and joining in SU events. It is also where the SU office is located.

The Students' Union is home to a diverse range of student-run societies including Bouldering Society, Chess Club, Christian Union, DASH (Disability, Access and Student Health), Electronic Music Society, Film Scoring Society, Folk Music Society, Football Society, Jazz Society, Minecraft Society and QRCM (LGBTQ+ Society). It encourages student-led musical projects, including the SU Big Band and Brass Band. The SU also has links with other institutions, including Imperial College London, which provides access to more than 380 clubs and societies, and CUKSN which is a board of SU Presidents from conservatoires across the UK.

Highlights of the SU social event calendar include Freshers' Week, Green Week, the Christmas Party and the Summer Ball.



FIND OUT MORE
www.rcm.ac.uk/rcmsu

OUR CAMPUS & FACILITIES

The Royal College of Music's campus and facilities are internationally renowned. We continually invest in our physical spaces and facilities to enhance your learning experience with us.

Our campus is located in South Kensington, a key cultural quarter of central London. Our main building, the Blomfield Building, sits on Prince Consort Road opposite the Royal Albert Hall. It is home to performance spaces, classrooms, rehearsal and practice facilities, the RCM Studios and RCM Library.

During 2020, we expanded our state-of-the-art spaces, adding a new Performance Hall and Performance Studio, two large orchestral and opera rehearsal rooms, café and courtyard.

In 2021, we also opened our new RCM Museum with one of the richest collections of music-related objects in the UK and Europe.

The adjoining South Building houses a performance space, practice facilities, the percussion suite and the RCM Students' Union.

RCM Jay Mews provides two large orchestra and opera rehearsal spaces and further practice rooms and is located next to the Royal Albert Hall, metres away from our iconic Blomfield Building.

WORLD-CLASS STAGES

We have three major performance spaces. The Amaryllis Fleming Concert Hall is the primary rehearsal and concert venue for RCM orchestras and large ensembles.

Our Britten Theatre is one of London's best-loved opera stages – with an orchestra pit and elegant tiered auditorium, it not only hosts our regular opera productions but also a variety of instrumental and ensemble performances.

The versatile new Performance Hall offers an alternative space for chamber ensemble performances and orchestral rehearsals, boasts a retractable stage, comprehensive technical infrastructure and variable acoustics, and is home to a new Fazioli grand piano.

In addition, we have several more intimate venues perfect for chamber and solo performances, including the new Performance Studio, the Parry Rooms and The Carne Room, which overlook the Royal Albert Hall, and the Recital Hall. Our performance spaces are used for rehearsals, masterclasses, concerts, recordings, community workshops, exhibitions and collaborative music-making of all kinds.

TEACHING AND PRACTICE

The RCM has a number of sound-proofed Amadeus music pods for private practice, and our new Blüthner Practice Suite holds 12 Blüthner Model A upright pianos. Students have access to our purpose-built percussion suite, and our magnificent Flentrop Orgelbouw organ in the Amaryllis Fleming Concert Hall. We also have dressing rooms for opera productions, instrument surgeries including luthier services and resident piano technicians, instrument storage, and dual-purpose practice and teaching spaces with audio visual equipment.

Image right

The RCM Jazz Orchestra led by Mark Armstrong performs in the Britten Theatre for an audience of local schoolchildren



RCM STUDIOS

Our audio, video and composition technology facilities enable performers and composers to work in professional studio conditions. The RCM Studio facilities are used on a range of technology-based courses and modules and the video production suite allows for broadcasts and recordings of RCM concerts. Any student can book the Belle Shenkman Studio, with a professional engineer, for a small fee to make recordings and videos for audition submissions, self-promotion and other purposes.

Our composition and production suites feature high-spec workstations for tuition and individual project work with a wide range of professional software such as Pro Tools, Logic, Cubase and extensive orchestral sample libraries.

The RCM's state-of-the-art Digital Innovation Lab opened this year. It allows students to record, mix, master and broadcast material in the most up-to-date formats.

The Lab also boasts Dolby Atmos 7.1.4 technology, a spatial audio format that immerses the listener in a dome of sound. This new development is becoming the commercial standard in the film, TV and gaming industries.

TECHNOLOGY SERVICES

Our highly skilled technology team provides a range of IT support services and is constantly improving and developing the technology available to support your studies. We provide a drop-in and online helpdesk, Wi-Fi, Microsoft Office 365 licences and free anti-virus protection software for all members of the College, and various discounted supplier purchase schemes for your personal use. Students have access to computers in our buildings, large format colour printers and music software including Sibelius, Noteflight and Audacity. In addition, we have hardware and software for visually impaired users.

Image below

A student experiences advanced visual simulation technology in the Performance Laboratory



DIGITAL SUPPORT

Our digital resources can be accessed from online devices across the world. Your studies will be supported by learn.rcm, the RCM's virtual learning environment: through it you can find your course, faculty and assessment information, submit your written assignments, upload and share audio and video recordings, and collaborate with RCM students and staff.

We also host collaborative masterclasses, lectures and performances with partners around the world using high-quality video conferencing and lecture capture platforms, including Microsoft Teams and Panopto, which are also used to support day-to-day learning and teaching.

A One-Touch Recording System allows students to record themselves in any of our performance spaces, using high-quality broadcast microphones and cameras. The same system is used to automatically record lectures, seminars and masterclasses that take place in our venues, making them available later for students to watch them back on Panopto in their own time.

We have recently partnered with Manhattan School of Music, the Royal Danish Academy of Music, and the University of Music and Performing Arts Vienna to launch the Global Conservatoire. This innovative scheme will allow you to gain new perspectives on a range of music studies in an online classroom with students from partner institutions.

Many concerts are filmed or recorded, and you can watch back performances and faculty events via our online internal video player, RCM Stream. This valuable teaching aid lets you analyse and learn from your performances on any device.

In addition, we live stream events on our website at www.rcm.ac.uk/live, so your family and friends outside London can experience your performances.

Image below

Student using new Performance Simulator in the Digital Laboratory





LIBRARY, RESOURCES AND SPECIAL COLLECTIONS

The Royal College of Music Library consistently receives a top ranking in the National Student Survey (NSS) and continues to integrate its diverse collections into the curriculum.

The RCM Library is run by a friendly and knowledgeable team who are here to support your studies. Our physical collections of over 200,000 items include music and scores, books, music journals and recordings.

The Library also gives students access to a wide range of online resources. These include e-books, e-scores, e-journals, Oxford Music Online, Naxos Music Library, Berlin Philharmonic Digital Concert Hall and Met Opera on Demand. Over 2022–23, the Library loaned more than 24,500 items and welcomed 100 external researchers. We were the first institution to have formed a partnership with nkoda, the digital sheet music library, and musicians can also use Henle Library, giving our students access to thousands of scores online.

The RCM Library also holds a world-class collection of 30,000 manuscripts and 40,000 early printed editions including autograph scores by Beethoven, Chopin, Elgar, Haydn, Mozart and Vaughan Williams. These are frequently used to support teaching and performances. The RCM Library's collections can be accessed via its online catalogues, and you can find out more at www.rcm.ac.uk/library

• THE DIGITAL RESOURCES THAT THE RCM PROVIDES ARE EXTREMELY EASY TO NAVIGATE AND ARE VERY HELPFUL FOR A WHOLE RANGE OF PROJECTS •

Daniil Margulis, Bachelor of Music (Hons)



THE MUSEUM AND ITS COLLECTIONS

Our new Royal College of Music Museum opened to the public in 2021. It maintains one of the richest collections of music-related objects in the UK and Europe, including the earliest known string keyboard instrument, and its treasures are regularly used for teaching and research. The Museum also hosts concerts and workshops, giving students the opportunity to perform within the galleries.

The Wolfson Centre in Music & Material Culture provides students with easy access to over 14,000 early musical instruments, paintings, drawings and sculptures which are part of the RCM's collections. The Centre includes a conservation workshop, climate-controlled on-site storage for our unique collections and a dedicated area for consultation, documentation and digitisation.

You can also explore the RCM Museum's collections in our digital catalogue at museumcollections.rcm.ac.uk

Image left

Students reviewing a unique manuscript held by the RCM: the Anne Boleyn Music Book (MS 1070)

Image above

Students visiting the Royal College of Music Museum's exhibition, 'Music, Migration and Mobility'

FIND OUT MORE

www.rcm.ac.uk/museum

GLOBAL OPPORTUNITIES

The Royal College of Music is a truly international community. We are proud to have musicians from more than 50 different countries studying here, with over half of our students coming from outside the UK.



● MY TIME IN THE FAROE ISLANDS VISCERALLY CHANGED ME. THE COMPANY AS WELL AS THE SCENERY WERE SO UNIQUE AND SPENDING EIGHT DAYS DEVELOPING AS A PERSON AND MUSICIAN HAS MADE ME COME BACK TO COLLEGE WITH LOTS OF ENERGY AND EXCITEMENT ●

Eva Serksnaite, Bachelor of Music (Hons)

International students are a key part of all aspects of life at the RCM, and you will have the chance to work and perform with musicians from all over the world. Our professors come from across the globe, bringing with them a wealth of experience and expertise. This is part of what makes the RCM such a friendly, exciting and diverse hub of music-making.

INTERNATIONAL RECOGNITION

The UK has a reputation as a world leader for high-quality education. The RCM's degree programmes are recognised globally by top universities, employers and government bodies, and we are the only UK conservatoire to award our own degrees to doctoral level. Employers value the UK education system's emphasis on critical thinking and independent learning. At the RCM you can tailor your programme according to your interests and future career aspirations.

STUDENT SUPPORT

Support is available for international students on a range of issues such as accommodation and settling into life in a new country. For those who need a student visa, our trained advisors will also guide you through each step of the application process. Find out more at www.rcm.ac.uk/international

GLOBAL PARTNERS

In addition to welcoming talented musicians from around the world to our home, the RCM works in collaboration with institutions such as the Nanyang Academy of Fine Arts in Singapore, Princeton University and Boston University to offer joint programmes of study.

Our partnership with Saline Royale Academy in Arc-et-Senans, France allows RCM students to experience an intensive programme of activity while learning from inspiring teachers in a technologically advanced environment.

ALUMNI WORLDWIDE

We have a diverse alumni network in more than 95 countries worldwide, and they tell us how fondly they remember their time at the Royal College of Music. We believe that you won't find a more welcoming and inspiring place to study anywhere in the world.

EXCHANGES

We have a range of exchanges available with leading European, American, Asian and Australian music conservatories and universities. These exchanges provide an excellent opportunity to study abroad at other leading institutions as part of your RCM studies. For further details visit www.rcm.ac.uk/exchanges

Image left
RCM bassoon students visiting the Faroe Islands



WATCH
www.rcm.ac.uk/watchinternational

SCHOLARSHIPS

The Royal College of Music is committed to accepting the best students from around the world. More than 50% of current students receive some financial support, thanks to the generosity of individuals, legators, companies and charitable trusts. Every year, their incredible support helps us to share £4 million amongst our talented students.

Any student who auditions in person or by video for a place on a performance or composition programme beginning in September 2025 will automatically be considered for a scholarship or study award. Scholarships are offered on the merits of your performance at your audition or interview. Scholarship amounts vary from student to student, ranging from a contribution towards your tuition fees right up to full fees. If you are offered a scholarship or study award you will receive a confirmation letter following your offer of a place.

FIND OUT MORE
www.rcm.ac.uk/scholarships





‘ HAVING THIS SCHOLARSHIP HASN’T JUST SUPPORTED ME THROUGH COLLEGE LIFE, IT’S HELPED ME SPEND MORE TIME DOING WHAT I ENJOY THE MOST, MAKING ME FEEL EVEN MORE CONFIDENT ABOUT JOINING THE MUSICAL WORLD AFTER GRADUATION. I’LL BE FOREVER GRATEFUL FOR THE FINANCIAL SUPPORT I RECEIVED FROM THE RCM. ’

Connor Gingell, Master of Performance



42 **BRASS** 44 **COMPOSITION** 46 **CONDUCTING** 48 **HISTORICAL PERFORMANCE**
50 **KEYBOARD** 52 **PERCUSSION** 54 **STRINGS** 56 **WOODWIND** 58 **VOCAL & OPERA**
60 **RCM OPERA STUDIO** 62 **RCM PROFESSORS**

www.rcm.ac.uk/faculties

FACULTIES

BRASS

Our Brass Faculty is a place where you can be yourself, express yourself as a musician and be amongst like-minded people who are all on their own journey in music. We are here to support you to find the career that will suit you best as a player.

Amos Miller, Head of Brass

OUTSTANDING PROFESSORS

The Brass Faculty has an outstanding team of professors, many of whom hold principal positions in major orchestras including the BBC Concert Orchestra, English National Opera Orchestra, London Symphony Orchestra, London Philharmonic Orchestra, Philharmonia, London Sinfonietta and Orchestra of the Royal Opera House. In addition to your one-to-one lessons, you will attend regular classes and ensemble coaching.

We also benefit from world-renowned visiting professors: Håkan Hardenberger as Prince Consort Professor, as well as Berlin Philharmonic Principal Horn Stefan Dohr, trumpet virtuoso Gustav Melander, and tuba legend Jens Björn-Larsen. Their regular visits include masterclasses, one-to-one teaching and ensemble work.

PERFORMANCE OPPORTUNITIES

You will have the opportunity to play with a wide variety of ensembles, from chamber groups formed by students to the RCM Symphony Orchestra and RCM Philharmonic. Our orchestras work with world-class conductors such as Joana Carneiro, Jonathon Heyward, Sakari Oramo, Vasily Petrenko, Rafael Payare, Martyn Brabbins and Sir Antonio Pappano. In addition, the RCM Opera Orchestra provides music for regular RCM Opera Studio performances, produced by acclaimed directors in the Britten Theatre. Our array of in-house orchestras enables us to offer one of the most extensive orchestral performance programmes of any UK conservatoire.

PROFESSIONAL EXPERIENCE

The RCM offers sit-in schemes with the Philharmonia, BBC Symphony and English National Opera Orchestras. These sit-in opportunities provide a vital link between the conservatoire and the profession, providing brass students with first-hand professional experience and mentorship from some of the finest players in the world.

VISITING ARTISTS

Distinguished international musicians give masterclasses throughout the year, and visitors have included renowned artists such as Abbie Conant, Martin Schippers, Sarah Willis, Brandt Attema, Øystein Baadsvik, Katy Woolley, Håkan Björkman, Sasha Romero, Philip Cobb, Alberto Menéndez Escribano, Oren Marshall, Gareth Small and Gabor Tarkövi.

RELATED STUDIES

Natural horn, natural trumpet, bass trumpet, jazz trumpet, jazz trombone, euphonium and sackbut are available as second or related study to promising students.

Brass players can also join the RCM Swing Band and RCM Jazz Orchestra. In addition to regular concerts at the College, the RCM Jazz Orchestra has performed at prestigious venues such as Ronnie Scott's and the Southbank Centre.

STUDENT SUCCESSES

Recent brass graduates have been appointed to permanent positions in orchestras such as the London Symphony Orchestra, BBC Scottish Symphony Orchestra, Philharmonia Orchestra, BBC Philharmonic Orchestra and the Ulster Orchestra, as well as making up a significant number of London's top freelance players.

For a full list of professors in the Brass Faculty, please see page 63.

For information on natural horn and natural trumpet see page 48 or visit www.rcm.ac.uk/hp



WATCH
www.rcm.ac.uk/watchbrass

GET IN TOUCH
brass@rcm.ac.uk

FIND OUT MORE
www.rcm.ac.uk/brass

• THE PROFESSORS IN THE BRASS FACULTY ARE NOT ONLY INCREDIBLY INSPIRATIONAL MUSICIANS, BUT BRILLIANTLY SUPPORTIVE, ENCOURAGING EVERY STUDENT TO BECOME THE BEST MUSICIAN THEY CAN BE •

Ellena Teal, Bachelor of Music (Hons)



COMPOSITION

Our internationally respected faculty works closely with students to explore what it means to be a composer in today's society. Collaborating with talented performers, students are encouraged to develop their musical voice and to gain the confidence and knowledge needed to grow as an independent, creative artist.

Dr Jonathan Cole, Head of Composition



HEAR YOUR WORKS COME TO LIFE

At the Royal College of Music you will have the opportunity to hear your compositions played by resident and visiting musicians, RCM orchestras, ensembles and fellow students of the highest musical ability. Collaborations take place across all the faculties with current projects including works for chamber groups, orchestras, the opera department and electronics. You will also have access to the RCM Studios and a wide range of immersive and virtual sound technology facilities.

The Composition Faculty regularly collaborates with a range of artistic organisations in London and beyond, including Tête à Tête, the Royal Academy of Arts, English National Ballet, the Royal College of Art, Alkyona Quartet, Explore Ensemble, Fidelio Trio, Head On Photo Festival in Australia, London Film School, Royal Academy of Dramatic Art, Central Saint Martins and the Shanghai Conservatory of Music.

EXCEPTIONAL PROFESSORS

Individual lessons and visits from established composers of concert, film and television music, including electro-acoustic and studio-based work, provide an unrivalled opportunity for you to nurture and develop your creative and technical skills as well as your own compositional voice.

Our professors and visiting professors are some of the biggest names in their fields and include leading British composers George Fenton, Deirdre Gribbin, Simon Holt, Dani Howard, Mark-Anthony Turnage (pictured) and Errollyn Wallen, as well as Shiva Feshareki, Dai Fujikura and Catherine Kontz.

VISITING COMPOSERS

World-leading composers for concert and film regularly give talks and classes to our students. Visitors in recent years have included Chaya Czernowin, Nainita Desai, Tansy Davies, Brett Dean, Michael Giacchino, Harry Gregson-Williams, Lisa Illean, David Lang, Dario Marionelli, Colin Matthews, Anna Meredith, Nico Muhly, Rachel Portman, Steve Reich, Howard Shore, Mel Wesson, Kate Whitley, Debbie Wiseman, Gary Yershon and Hans Zimmer.

PROFESSIONAL SUCCESS

RCM composers are enjoying professional success in the UK and internationally. Notable recent achievements have included prizes at the Royal Philharmonic Society Awards, Primetime Emmy Awards, Grammy Awards, Oticons Faculty International Film Music Competition, the Hindemith Prize, the Ernst von Siemens Music Prize, BMI Student Composer Awards and the Ivors Academy Composer Awards, as well as the ASCAP Foundation Michelle and Dean Kay Award.

COMPOSITION FOR SCREEN

Our highly regarded postgraduate offering in Composition for Screen will help you to develop professionally in this competitive and rewarding field. London is one of the busiest production centres in the world for the film, television and advertising industries. Studying at the RCM, with its extensive professional and collaborative links with film and animation schools, studios and industry professionals, ensures you are at the heart of this creative environment.

Over the past few years, we welcomed Dario Marianelli, Nainita Desai, Daniel Pemberton, Rachel Portman and George Fenton as visiting composers to our faculty.

Composition for Screen alumni are working worldwide throughout the industry, from Hollywood to Europe and Asia, and have won numerous accolades including BAFTA, Grammy, Golden Globe and Academy awards for work in film, television and gaming.

Explore works by current students at www.rcm.ac.uk/compforscreen

For a full list of professors in the Composition Faculty, please see pages 63–64.

“MY COMPOSITION TEACHERS HAVE HELPED ME ENORMOUSLY THROUGHOUT MY COURSE. THEY ENABLED ME TO FIND MY OWN VOICE AS A COMPOSER AND PUSHED MY TECHNICAL ABILITIES IN ONE-TO-ONE LESSONS, MASTERCLASSES AND SEMINARS.”

Anian Wiedner, Bachelor of Music (Hons)



WATCH

www.rcm.ac.uk/watchcomposition

GET IN TOUCH

composition@rcm.ac.uk

FIND OUT MORE

www.rcm.ac.uk/composition

CONDUCTING

Our two-year postgraduate course nurtures the complete conductor for the present day, offering exceptional opportunities, inspiration and mentorship. Learning both strong technique and communication skills, you will be supported as you hone your own individuality and style, and will be involved in all aspects of musical life at the Royal College of Music.

Toby Purser, Head of Conducting

CREATIVE LEARNING

Supported by three of the world's leading conducting professors, coupled with a detailed programme of repertoire study, you will be enabled to develop as a free-thinking individual equipped with the practical and professional skills necessary to progress in this complex and demanding discipline.

PODIUM TIME

Alongside scheduled ensemble and orchestral time in class, we encourage you to take advantage of opportunities to conduct ensemble, orchestral and operatic repertoire. In addition to podium time with the RCM Philharmonic Orchestra, RCM Symphony Orchestra and various new music ensembles, you will be able to organise your own projects, including a termly Conductors' Podium concert, and work with ensembles from across the Royal College of Music.

STUDENT SUCCESS

Current RCM conductors and recent alumni have enjoyed professional and competition success in the UK and beyond. Notable professional positions include Assistant Artistic Director of Regents Opera and Assistant Conductor of Ensemble intercontemporain, Paris.

VISITING CONDUCTORS

The RCM regularly welcomes exceptional international conductors to work with our orchestras and ensembles, whenever possible including a conducting masterclass and opportunity for the students to act as their assistant conductor, as well as to lead orchestral and sectional preparations. Students regularly enjoy the opportunity to learn from British conductor Martyn Brabbins, our Prince Consort Professor of Conducting. Other recent visitors, online and in person, have included Joana Carneiro, Nicholas Collon, Jessica Cottis, Jonathon Heyward, Vladimir Jurowski, Holly Mathieson, Sir Roger Norrington, Sakari Oramo, Sir Antonio Pappano, Rafael Payare, Jac van Steen, John Wilson and Thomas Zehetmair.

SECOND STUDY

Conducting is also available to undergraduates and postgraduates as an elective module class without audition. This involves conducting your classmates in set repertoire and focusing on the skills and knowledge necessary to develop in this field. Second study lessons in conducting are available for undergraduate and postgraduate students who have significant conducting experience.

For a full list of professors in Conducting, please see page 64.

 **WATCH**
[www.rcm.ac.uk/
watchconducting](http://www.rcm.ac.uk/watchconducting)

GET IN TOUCH
conducting@rcm.ac.uk

FIND OUT MORE
www.rcm.ac.uk/conducting

LEARNING WITH THREE DIFFERENT PROFESSORS IS UNIQUE. WE ARE ABLE TO LEARN FROM THREE DIFFERENT PERSPECTIVES, WORLDS AND OPINIONS. THIS WIDE PERSPECTIVE HELPS US TO DEVELOP THE MOST IMPORTANT THING, OUR OWN INDIVIDUALITY AS YOUNG CONDUCTORS.

Michal Oren, Master of Performance



HISTORICAL PERFORMANCE

The Historical Performance Faculty provides intensive training in all aspects of historically informed interpretation. We encourage students to engage with our resources and collaborate with our outstanding professors, so they can present music effectively and make a meaningful contribution to the profession.

Professor Ashley Solomon, Chair & Head of Historical Performance



THEORY AND PRACTICE

Individual lessons on the complete range of historical instruments are offered by a faculty of exceptional professors, many of whom are principal players in major period instrument orchestras, soloists and members of well-known ensembles. There are outstanding research and study opportunities to support your training, including an extensive collection of manuscripts and early printed editions housed in the RCM Library. The new Royal College of Music Museum also holds approximately 1,000 historical instruments dating as far back as the 15th century.

PERFORMANCE OPPORTUNITIES

The RCM has its own dedicated Baroque Orchestra, which regularly performs Bach cantatas. It also collaborates with other conservatoires, including the Salzburg Mozarteum and Bremen Hochschule, and has performed Bach's Magnificat in D major and Reena Esmail's *This Love Between Us* with the BBC Singers in a live BBC Radio 3 broadcast. Further performance opportunities have included appearances at major festivals such as the Bath International Music Festival and the London Handel Festival, and at heritage venues including Hatchlands Park and Windsor Castle, where RCM musicians performed for BBC Radio 3's *Early Music Show*.

In addition, there are regular chamber performances in the Queen's Gallery at Buckingham Palace. Further afield, our students have performed in the Thomaskirche Leipzig and the Orangery Palace in the Sanssouci Park of Potsdam. There have been video conference masterclasses with the Sydney Conservatorium of Music, Royal Danish Academy of Music and The Hong Kong Academy for Performing Arts.

In 2021 the RCM launched the New Generation Baroque Ensemble scheme in collaboration with BBC Radio 3 and the National Centre for Early Music. Each year an early career ensemble will be mentored by the RCM's Chair & Head of Historical Performance, work in collaborative side-by-side sessions and give two recitals.



INTERNATIONAL TOURS

The Historical Performance Faculty regularly offers international tours, giving you the opportunity to further enhance your study by performing in world-renowned venues and to experience global music. Tours have included festivals throughout Italy, as well as performances in Paris, Salzburg, Bremen and Potsdam. Historical Performance students also have the opportunity to participate in the biennial Festival Misiones de Chiquitos in Bolivia.

VISITING ARTISTS

We hold masterclasses with distinguished international exponents of historical performance. Recent visitors, online and in person, have included Kees Boeke, Christophe Coin, Menno van Delft, Walter van Hauwe, Wilbert Hazelzet, Paolo Pandolfo, Rachel Podger, Jean Rondeau and David Watkin.

CHAMBER MUSIC

You are encouraged to form your own chamber groups and expand your repertoire. All RCM chamber groups can benefit from unlimited coaching. You can also access 18th-century chamber music coaching from Florilegium, our Ensemble in Association, and in 2020 we acquired the Kennedy-Mietke harpsichord, a double-manual harpsichord inspired by Mietke, made by Bruce Kennedy.

The RCM's annual International Festival of Viols, which launched in 2007, features concerts, masterclasses and lectures. Recent visiting artists have included Christophe Coin, Fretwork, Vittorio Ghielmi, Paolo Pandolfo and Jordi Savall.

For a full list of professors in the Historical Performance Faculty, please see pages 64–65.

“WHAT I LOVE MOST IS THE PRACTICAL APPROACH OF PROFESSORS, FROM FACULTY CLASSES TO THE CHAMBER AND ORCHESTRAL PROJECTS THAT HAVE TAKEN US AS FAR AS BOLIVIA FOR AN INTERNATIONAL FESTIVAL”

Pablo Tejedor-Gutiérrez, Artist Diploma in Performance



WATCH

www.rcm.ac.uk/watchhp

GET IN TOUCH

historicalperformance@rcm.ac.uk

FIND OUT MORE

www.rcm.ac.uk/hp

KEYBOARD

We pride ourselves on being a nurturing faculty, encouraging you to achieve your personal goals and develop the skills to be successful in today's music profession. Our programmes will help you to fulfil your potential as a musician and enable you to specialise in a variety of areas.

Professor Vanessa Latarche, Head of Keyboard, Chair of International Keyboard Studies and Associate Director for Partnerships in Asia



SPECIALISED TEACHING

We provide tuition in a range of subjects including piano, contemporary piano, collaborative piano and organ, as well as fortepiano and harpsichord.

As a pianist you will have the opportunity to perform and have lessons on Steinway, Fazioli and Bechstein grand pianos, and our impressive Blüthner Practice Suite holds 12 Blüthner pianos available for practice. Organists have access to our selection of instruments, including our magnificent Flentrop Orgelbouw organ in the Amaryllis Fleming Concert Hall, as well as opportunities to play and have lessons on external organs, such as at the Royal Albert Hall.

Collaborative piano is available at undergraduate level on a modular basis, and for those at postgraduate level, you can focus specifically on this art form. Our professors in collaborative piano are all successful pianists who can offer singular expertise and insight into this competitive field. You will also have opportunities to work with students studying in other faculties.

Our distinguished and experienced professors are drawn from around the globe and are dedicated to helping you develop as a professional musician. Many have successful performing careers and our organ professors hold positions in prestigious churches and cathedrals.

VISITING ARTISTS

We welcome renowned international pianists for masterclasses, giving you the chance to play for and learn from today's most accomplished performers. Recent visitors include Lang Lang, Stephen Hough, Boris Berman, Angela Hewitt, Stanislav Ioudenitch, Sir Andrés Schiff, Martin Schmeding, Susanna Stranders, Mira Yevtich and Dina Yoffe.

“THE PROFESSORS IN THE KEYBOARD FACULTY HAVE ALWAYS BEEN ENCOURAGING AND KIND TO ME, ALLOWING ME TO DEVELOP MY POTENTIAL AS A MUSICIAN AND AS A PERSON.”

Nicole Ng, Bachelor of Music (Hons)

PERFORMANCE OPPORTUNITIES

Soloists have the opportunity to perform concertos with RCM orchestras, which are regularly joined by world-renowned conductors. Performances have included Beethoven's Piano Concerto no 4, conducted by Sakari Oramo; Liszt's Piano Concerto no 2, conducted by Adrian Partington; Ravel's Piano Concerto in G major, conducted by Sir Antonio Pappano; and Rachmaninov's Piano Concerto no 3, conducted by Andrew Gourlay at the Royal Festival Hall.

You are encouraged to form your own RCM chamber groups, which can benefit from unlimited coaching. You can also receive invaluable preparation for international competitions. In addition, we hold an annual Keyboard Festival, offering the whole faculty an opportunity to perform.

PROFESSIONAL SUCCESS

RCM pianists regularly win prizes at major international competitions. Recent examples include First Prize at the Leeds International Piano Competition, as well as prizes at other major competitions such as the Franz Liszt, Van Cliburn, Cleveland and Hastings International piano competitions. Pianists from the RCM have also been successful at the BBC Young Musician of the Year, Jaques Samuel and Beethoven Intercollegiate piano competitions. RCM collaborative pianists regularly win accompanist prizes, including in the Kathleen Ferrier Awards.

Our pianists have also enjoyed positions as BBC Radio 3 New Generation Artists and City Music Foundation Artists, and on the Young Concert Artists and Young Classical Artist Trust programmes. Many students hold organ scholarships while studying, for example at Westminster Abbey or St Martin-in-the-Fields.

For a full list of professors in the Keyboard Faculty, please see pages 65–66.

Find out about postgraduate collaborative piano at www.rcm.ac.uk/collaborativepiano



WATCH
[www.rcm.ac.uk/
watchkeyboard](http://www.rcm.ac.uk/watchkeyboard)

GET IN TOUCH
keyboard@rcm.ac.uk

FIND OUT MORE
www.rcm.ac.uk/keyboard

PERCUSSION

Many former students of the Percussion Faculty are in the UK's leading orchestras. The backbone of our teaching still has a clear orchestral focus, but today's training covers all aspects of percussion activity and equips you with the essential skills needed for the profession.

David Hockings, Head of Percussion

PERCUSSION SUITE

At the Royal College of Music, you will benefit from our purpose-built percussion suite, opened by Dame Evelyn Glennie. In addition to practice rooms, there are spaces dedicated to specific instruments: timpani, vibraphone, marimba and orchestral, as well as a multi-percussion room for recital and ensemble practice, a large main space for masterclasses and sectional rehearsals, and a bespoke studio room for recording. Both the main room and studio feature recording equipment and the studio also contains two drum kits, Latin instruments, vibraphone and keyboards ready for recording sessions.

SPECIALIST TEACHING

Many of the Percussion Faculty staff members hold principal positions in major orchestras including the BBC Symphony Orchestra, London Symphony Orchestra, London Philharmonic Orchestra, Orchestra of the Royal Opera House and Orchestra of the Age of Enlightenment.

At undergraduate level you will receive timpani and percussion lessons as well as regular lessons on solo marimba, jazz vibraphone, Latin percussion and drum kit. At postgraduate level we offer solo marimba as a principal study on our Master of Performance course.

PERFORMANCE OPPORTUNITIES

As well as regular faculty performance classes and termly percussion showcases, you will have the chance to perform with the RCM's major ensembles and orchestras, our very own American drumline, the Redhocks, and our percussion quartet, PERC'M.

RCM percussionists enjoy performing in a variety of external venues both in the UK and overseas, and have toured with Serge Vuille, She-e Wu and David Hockings.

VISITING ARTISTS

You will have the chance to participate in repertoire classes with players from the London Symphony Orchestra and BBC Symphony Orchestra as well as masterclasses with distinguished international musicians. Visitors have included Colin Currie, O Duo, Peter Erskine, David Friedman, Eric Sammut, She-e Wu and Raphael Haeger, the Principal Percussionist with the Berlin Philharmonic Orchestra.

Our annual Festival of Percussion has attracted percussion ensembles such as Amadinda, O Duo and 4-MALITY; artists such as John Chimes, Benny Greb, Mark Guiliana, Pete Lockett, Jojo Mayer, John Riley, Ralph Salmins and Dave Weckl; as well as representatives from leading percussion ensembles and major London orchestras.

For a full list of professors in the Percussion Faculty, please see page 66.



WATCH

[www.rcm.ac.uk/
watchpercussion](http://www.rcm.ac.uk/watchpercussion)

GET IN TOUCH

percussion@rcm.ac.uk

FIND OUT MORE

www.rcm.ac.uk/percussion

EVERY TIME I WALK INTO THE RCM
I AM STRUCK BY ITS VIBRANCY.
THE BUILDING IS CONSTANTLY ALIVE
WITH MUSIC, AND EVEN WALKING
THROUGH THE CORRIDORS HEARING
REHEARSALS AND STUDENTS PRACTISING
LEAVES ME ITCHING TO PICK UP
MY INSTRUMENT.

Rosemary Ball, Bachelor of Music (Hons)



STRINGS

The Strings Faculty is a thriving artistic community of exceptional young musicians united by a love of music. By learning from an array of world-leading performers and teachers, all our students are encouraged to achieve the highest level possible in their solo, chamber and orchestral playing and to become versatile, entrepreneurial musicians well equipped for the challenges of the international music profession.

Gary Ryan, Acting Head of Strings



INTERNATIONAL PROFESSORS

A dedicated teaching staff of world-class professors will offer you invaluable support via one-to-one lessons at the Royal College of Music, with those who have studied in the Strings Faculty frequently going on to achieve professional acclaim and competition success. Classes given by visiting professors feature many of today's greatest musicians, including Nicola Benedetti, Eszter Haffner, Alina Ibragimova, Tasmin Little, Maxim Vengerov, Maxim Rysanov, Ivo-Jan van der Werff, Nora Romanoff-Schwarzberg, Torleif Thedéen, Denis Brott, Marc Coppey, Gustav Rivinius, Paul Ellison, Olivier Thiery, Irina Zingg, Sean Shibe and John Williams (guitar).

CHAMBER MUSIC

Chamber music is a key part of your musical experience and RCM groups can receive unlimited chamber coaching from our professors. There are numerous opportunities for chamber ensembles to perform at internal and external venues such as Wigmore Hall and Cadogan Hall, and in festivals, collaborations and competitions. Recent events as part of the RCM's String Quartet Platform have included classes with the Brodsky Quartet, Marmen Quartet and our Ensemble in Association, the Sacconi Quartet.

ONE OF THE AMAZING THINGS ABOUT COLLEGE IS THE NUMBER OF OPPORTUNITIES FOR CHAMBER MUSIC, BECAUSE THE TEACHING STAFF CAN FACILITATE ANY TYPE OF GROUP AND ALWAYS MAKE IT AN AMAZING EXPERIENCE

Sam Lee, Bachelor of Music (Hons)

 **WATCH**
[www.rcm.ac.uk/
watchstrings](http://www.rcm.ac.uk/watchstrings)

GET IN TOUCH
strings@rcm.ac.uk

FIND OUT MORE
www.rcm.ac.uk/strings

ORCHESTRAL AND CONCERTO PERFORMANCE

Students are offered unparalleled orchestral experiences with our vibrant ensembles, which have regularly performed under the baton of renowned conductors including Martyn Brabbins, Jessica Cottis, Sir Andrew Davis, Sir Antonio Pappano, Sakari Oramo, Kevin John Edusei, Joana Carneiro, Vasily Petrenko and Rafael Payere, as well as musicians from the Chamber Orchestra of Europe.

There are also opportunities to perform as a concerto soloist – recent student performances have included the Britten Violin Concerto, Mozart's Sinfonia Concertante in E flat, Tavener's *The Protecting Veil*, Saint-Saëns' Cello Concerto, and *On Opened Ground* by Mark-Anthony Turnage, as well as concerto masterclasses with full orchestra with Maxim Vengerov.

INDIVIDUAL DEVELOPMENT

At the RCM your particular musical interests are recognised and encouraged, and a unique programme of study is tailored to you. Violinists, violists and cellists regularly work with professional accompanists to help develop duo skills. There are also weekly faculty classes and ensemble opportunities with expert practitioners for double bass, harp and guitar students led by specialist RCM professors and visiting teachers.

In addition, students have the opportunity to attend and perform in a wide variety of public masterclasses led by leading teachers and performers active on the international musical scene.

For a full list of professors in the Strings Faculty, please see pages 67–68.

For information on historical strings studies see page 48.



WOODWIND

We encourage every student to become a musician with their own individual voice in a supportive, collaborative and stimulating environment. Our professors are eminent musicians in their field whilst being passionate about teaching and supporting future generations.

Marie Lloyd, Head of Woodwind

LEARNING ENVIRONMENT

The Woodwind Faculty and the wider RCM community foster a culture of nurturing all students in a supportive environment. You are encouraged to grow into a confident and imaginative performer, taking advantage of all the opportunities available to you.

Central to your experience will be one-to-one lessons with world-class professors, many of whom are principal players in major orchestras. We are always looking to develop and progress as a faculty, and some of our latest professorial appointments have included five principals of major London orchestras; Juliana Koch and Olivier Stankiewicz, Principal Oboes of the London Symphony Orchestra; Emily Hultmark, Principal Bassoon of the Philharmonia; Roberto Giaccaglia, Principal Bassoon of the BBC Philharmonic Orchestra; and Peter Sparks, Co-Principal Clarinet of the English National Opera Orchestra.

VISITING ARTISTS

You will have the opportunity to attend regular faculty masterclasses with distinguished international musicians. Recent visitors have included the Berlin Philharmonic Wind Quintet and the Royal Concertgebouw Orchestra Wind Quintet, as well as Sergio Allegrini, Clara Andrada de la Calle, Joshua Batty, Juliette Bausor, Arno Bornkamp, Trish Clowes, Samuel Coles, Ole Kristian Dahl, Paolo De Gaspari, Nick Deutsch, Amy Dickson, Elaine Douvas, Kai Frömbgen, Romain Guyot, Amy Harman, Melanie Henry, Maximiliano Martin, Gerard McChrystal, Pascal Moragues, Gustavo Núñez, Miriam Pastor Burgos, Naomi Sullivan, Philippe Tondre, Jacques Tys, Matthew Wilkie, Marcus Weiss, and Nikita Zimin and Stefan Dohr.

PERFORMANCE OPPORTUNITIES

The RCM provides unparalleled orchestral opportunities. Our Philharmonic and Symphony orchestras regularly work with a selection of the best conductors in the world and recent visitors have included Martyn Brabbins, Joana Carneiro, Jessica Cottis, Sir Andrew Davis, Sakari Oramo, Sir Antonio Pappano, Vasily Petrenko, Chloé van Soeterstède, Jac van Steen, John Wilson and Thomas Zehetmair.

We have a vibrant chamber music culture and you are encouraged to form your own ensembles. All RCM chamber groups can benefit from a generous coaching allowance with professors and top visiting chamber musicians and there are numerous opportunities for you to perform chamber repertoire each year. We have over 170 chamber concerts that you are able to apply to take part in over the course of each year.



WATCH

www.rcm.ac.uk/watchwoodwind

GET IN TOUCH

woodwind@rcm.ac.uk

FIND OUT MORE

www.rcm.ac.uk/woodwind

• THE WOODWIND FACULTY FEELS LIKE A BIG FAMILY WHERE I'VE NOT ONLY LEARNED TO PLAY A RANGE OF MUSIC BUT ALSO FELT WHOLEHEARTED SUPPORT AND ASSISTANCE FROM ALL THE PROFESSORS. THESE EXPERIENCES HAVE PROPELLED ME FURTHER ON MY MUSICAL PATH AND HAVE GIVEN ME THE CONFIDENCE TO FACE ANY CHALLENGES.

Siping Guo, Master of Performance

PROFESSIONAL SUCCESS

Our woodwind graduates are enjoying unrivalled success. Students from the RCM Woodwind Faculty have won the Royal Over-Seas League Gold Medal on the last three occasions it was awarded to a woodwind player, between 2016 and 2021. RCM musicians have been awarded principal woodwind positions with the Royal Opera House, Sydney Symphony Orchestra, Shanghai Symphony Orchestra, RTÉ Concert Orchestra, Bournemouth Symphony Orchestra, Philharmonia, English National Opera Orchestra and London Philharmonic Orchestra, as well as positions with some of the UK's leading chamber ensembles including Ensemble 360 and Riot Ensemble.

For a full list of professors in the Woodwind Faculty, please see page 68.

For information on historical woodwind studies see page 48 or visit www.rcm.ac.uk/hp



VOCAL & OPERA

In Vocal & Opera we welcome imaginative, curious and self-motivated individuals with a desire to communicate their love of singing to an audience. You will become part of a faculty with an exceptional record that encourages its students to reach their full potential.

Nicholas Sears, Head of Vocal & Opera



BESPOKE TRAINING

We keep the individual's needs at the heart of our teaching. You will work on developing a secure and flexible vocal technique with the help of our team of internationally acclaimed vocal professors and repertoire and operatic coaches. Our comprehensive range of classes will enhance all aspects of your craft and enable you to present yourself with confidence, authority and autonomy in a professional context.

There are numerous opportunities to perform modern and period works in collaboration with the Composition and Historical Performance faculties as well as to work with distinguished artists both inside and outside the RCM across faculties on song, chamber music and other themed projects.

VISITING ARTISTS

We welcome some of the finest international artists for our regular masterclass series. Recent visitors have included Sir Thomas Allen, Dame Sarah Connolly, Danielle de Niese, Joyce El-Khoury, Gerald Finley, Angela Gheorghiu, Sumi Jo, Dame Kiri Te Kanawa, Ann Murray, Brindley Sherratt, Edith Wiens and Roderick Williams.

‘I AM SO GRATEFUL TO THE RCM FOR GIVING ME THE OPPORTUNITY TO MAKE MY OPERATIC DEBUT. BEING IN A DRESSING ROOM WITH ALL MY FRIENDS BEFORE THE SHOWS GAVE ME THE SAME FEELING I'D HAVE IN THE FOOTBALL CHANGING ROOM BEFORE A CUP FINAL.’

David Fraser, Bachelor of Music (Hons)



WATCH

www.rcm.ac.uk/watchvocal

GET IN TOUCH

vocal@rcm.ac.uk

FIND OUT MORE

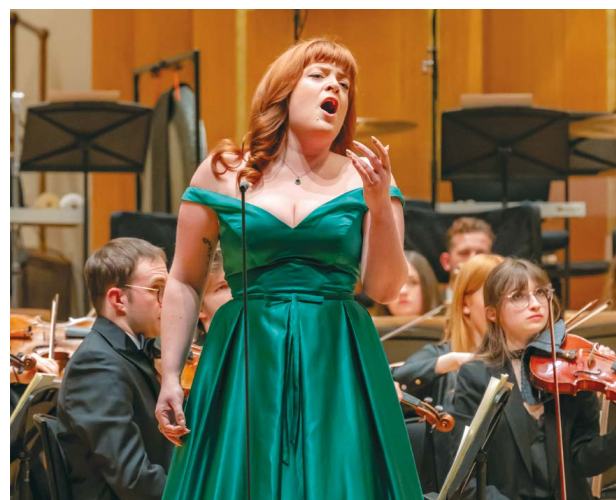
www.rcm.ac.uk/vocal

PROFESSIONAL SUCCESS

Singers at the RCM enjoy both professional and competitive success around the globe. Recent international competition recognitions include the Kathleen Ferrier Awards, BBC Cardiff Singer of the World, Wigmore Hall/Bollinger International Song Competition, Grange Festival International Singing Competition, Metropolitan Opera National Council Auditions, Royal Over-Seas League Annual Music Competition, and the Cesti and Viñas competitions.

RCM singers have frequently performed on the stages of the world's greatest opera houses and concert halls, including the Royal Opera House, Glyndebourne, Théâtre des Champs-Élysées, Theater an der Wien, Metropolitan Opera New York, Wigmore Hall, Royal Festival Hall, Carnegie Hall and the Royal Albert Hall. Our graduates regularly progress onto internationally renowned young artist programmes such as the National Opera Studio, Jette Parker Artists Programme at the Royal Opera House, Bayerische Staatsoper Studio, L'Atelier Lyrique de l'Opéra national de Paris, Zürich Opera Young Artists Programme, Houston Grand Opera Studio, ENO Harewood Young Artists, Metropolitan Opera's Lindemann Young Artist Development Programme and Welsh National Opera's Associate Artist scheme.

For a full list of professors in the Vocal & Opera Faculty, please see pages 69–70.



RCM OPERA STUDIO

The Royal College of Music Opera Studio (RCMOS) offers one of the leading advanced training courses in the world. Our aim is to provide a nurturing environment, building on the skills, artistry and confidence of our singers, so that they leave fully prepared to meet the demands of the profession.

Michael Rosewell, Director of Opera

As part of an elite and carefully constituted group of exceptionally talented singers, you will benefit from rigorous training, sensitive to your individual needs and responsive to the demands of the profession. You will work regularly with a team of coaches, musicians and theatre professionals drawn from the senior ranks of the country's leading opera companies and perform in acclaimed productions in the first-class Britten Theatre.

PERFORMANCE OPPORTUNITIES

In our opera training we replicate professional performance conditions so that there is a smooth transition for students as they prepare for their careers. We launch a number of RCMOS productions each year as well as sets of fully staged opera scenes in the Britten Theatre. You will have the benefit of rehearsing and performing with highly experienced, influential industry professionals, who occupy key posts at the great opera houses of Europe and beyond.

“I LOVE THE LEVEL OF DEDICATION AT THE COLLEGE. THE COURSE STRUCTURE IS EXEMPLARY, ENABLING ME TO TRAIN AT THE HIGHEST POSSIBLE LEVEL AND FURTHERING MY DREAM TO HAVE AN INTERNATIONAL CAREER IN OPERA.”

Marcus Swietlicki, Artist Diploma in Opera

PROFESSIONAL MENTORSHIP

In addition to receiving regular core training, you will gain unique artistic and professional insights through mentorship by internationally renowned artists including Sir Thomas Allen, Angela Gheorghiu, Dame Kiri Te Kanawa and Edith Wiens. Career development and support is an integral part of your studies, and we have recently held a series of virtual mentorship sessions with the eminent baritone Gerald Finley, Sophie Joyce of L'Opéra national de Paris, Richard Hetherington of the Royal Opera House, Michelle Williams of English National Opera, as well as with leading classical music agents. The RCM's Centre for Performance Science will also assist you in gathering the information and skills necessary for the development of your future professional career.

For a full list of professors in the RCM Opera Studio, please see page 70.

Image right

An RCM Opera Studio production of Gazzaniga's *Don Giovanni Tenorio*

GET IN TOUCH

opera@rcm.ac.uk

FIND OUT MORE

www.rcm.ac.uk/operastudio



RCM PROFESSORS



BRASS

HEAD OF BRASS

Amos Miller MA (Oxon), DipRAM, LRAM, ARAM, SFHEA

DEPUTY HEAD OF BRASS

Alex Edmundson MMus, LRSM, DipABRSM

PRINCE CONSORT PROFESSOR

Håkan Hardenberger

VISITING PROFESSOR OF HORN

Stefan Dohr

VISITING PROFESSOR OF TRUMPET

David Elton BMus(Hons), MMus

HORN

Nigel Black FRCM

Alex Edmundson MMus, LRSM, DipABRSM

Timothy Jones

Simon Rayner ARCM, FRCM

John Ryan BMus(Hons), GSMD

John Thurgood GRSM, ARCM

Diego Incertis Sánchez BMus(Hons)

TRUMPET

Nicholas Betts AGSM

Mark Calder DRSAM

David Elton BMus(Hons), MMus

Jason Evans BMus(Hons), LRSM, DipABRSM, AMusTCL, ARAM

James Fountain BMus, GSMD

Niall Keatley BMus(Hons)

Kate Moore GGSM

Alan Thomas BMus(Hons), PGDip (Perf)

Dan Newell

JAZZ TRUMPET

Martin Shaw GRSM, LRAM

LEAD TRUMPET

Mike Lovatt HonARAM, GTCL, LTCL

VISITING PROFESSOR OF TROMBONE

Kris Garfitt

TENOR TROMBONE

Byron Fulcher GGSM

Matthew Knight BA(Hons), MA(Cantab), DipRAM, ARAM

Lindsay Shilling ARCM, FRCM

Becky Smith BMus(Hons)

BASS AND CONTRABASS TROMBONE

James Buckle BMus(Hons), ARAM, LRAM

Paul Milner PPRNCM

JAZZ AND LEAD TROMBONE

Richard Edwards

VISITING PROFESSOR OF TUBA

Jens Björn-Larsen

TUBA

Owen Slade

Peter Smith BMus(Hons), ARAM, LRAM

Dan Trodden BMus(Hons), ARAM, LRAM

COMPOSITION

HEAD OF COMPOSITION

Dr Jonathan Cole MMus, PhD, FRCM

PRINCE CONSORT PROFESSOR OF COMPOSITION

Dr Colin Matthews FRCM

AREA LEADER IN MASTERS PROGRAMMES IN COMPOSITION FOR SCREEN

Dr Dimitri Scarlato DMus

MASTERS COMPOSITION COORDINATOR

Dr Ed Bennett BA(Hons), MMus, PhD

RCM RESEARCH FELLOW IN COMPOSITION

Dr Mark-Anthony Turnage CBE FRCM

COMPOSITION

Dr Dai Fujikura PhD

Dr Deirdre Gribbin PhD, Fulbright Fellow, Churchill Fellow

Kenneth Hesketh MMus (Ann Arbor), ARCM (PG), DipRCM

Dr Edwin Hillier MMus

Simon Holt FRNCM

Dr Alison Kay BA(Hons), ARCM(PG), MMus, DPhil

Haris Kittos BA, MMus, DMus

Dr Catherine Kontz BMus(Hons), MMus, PhD

Dr Colin Matthews FRCM

William Mival MMus, FHEA, FRCM

Dr Errollyn Wallen CBE

For more information on the Brass Faculty please see page 42.

For information on natural horn and natural trumpet see page 48 or visit www.rcm.ac.uk/hp

COMPOSITION

COMPOSITION FOR SCREEN

Laurence Aston BA

Assistant Professor Michael Hyman
MMus BA(Hons)

Michael Ladouceur BMus, MMus

Enrica Sciandrone MMus, MA

Filip Sijanec BA, MA

Kate Simko MMus

ELECTRO-ACOUSTIC COMPOSITION

Michael Ladouceur BMus, MMus

Nicholas Moroz MMus

Dr Jonathan Pitkin MA(Oxon),
MMus, DMus (RCM)

Kate Simko MMus

For more information on the
Composition Faculty please see
page 44.

CONDUCTING

HEAD OF CONDUCTING

Toby Purser MA, DipPerf RAM, ARAM

POSTGRADUATE PROFESSORS OF CONDUCTING

Peter Stark HonDMus, HonFTCL,
HonARAM, GRSM, ARCM

Howard Williams BMus, MA, HonARAM

PRINCE CONSORT PROFESSOR OF CONDUCTING

Martyn Brabbins BMus, MMus,
HonDMus (Bristol), LGSM, FRCM

PROGRAMMING AND PROFESSIONAL MENTORSHIP

Paul Hughes

UNDERGRADUATE PROFESSOR OF CONDUCTING

Natalia Luis-Bassa BMus, PGDip, MMus

RECENT VISITING CONDUCTORS

Joana Carneiro

Nicholas Collon

Jessica Cottis

Andrew Gourlay

Jonathon Heyward

Vladimir Jurowski

Holly Mathieson

Colin Metters

Sakari Oramo

Sir Antonio Pappano

Rafael Payare

Vasily Petrenko

Chloé van Soeterstède

Jac van Steen

John Wilson

Thomas Zehetmair

For more information on Conducting
please see page 46.

HISTORICAL PERFORMANCE

CHAIR & HEAD OF HISTORICAL PERFORMANCE

Professor Ashley Solomon FRAM,
FRCM, HonRCM

CHAIR OF HISTORICAL PERFORMANCE

Professor Colin Lawson CBE, MA
(Oxon), MA, PhD, DMus, FRCM,
FRNCM, FLCM, HonRAM

ENSEMBLE IN ASSOCIATION

Florilegium

PRINCE CONSORT PROFESSOR OF HISTORICAL PERFORMANCE

Sir Roger Norrington CBE

CHAIR OF HISTORICAL KEYBOARD INSTRUMENTS

Professor Terence Charlston MA,
MMus, FRCM, FRCO, ARAM
harpsichord, clavichord,
continuo organ

VISITING PROFESSOR OF HARPSICHORD AND ORGAN

Ton Koopman

KEYBOARD

Jane Chapman BA, Hon RCM,
ARCM harpsichord

Professor Terence Charlston MA,
MMus, FRCM, FRCO, ARAM
harpsichord, clavichord,
continuo organ

Robert Woolley GRSM, ARCM
harpsichord, clavichord,
continuo organ

FORTEPIANO

Geoffrey Govier MFA, MMus,
DMA, GRSM, ARCM, LTCL
piano and clavichord

BRASS

Susan Addison ARCM sackbut

Peter Harvey ARCM

Roger Montgomery BA(Hons), GSMD
natural horn

Paul Sharp BMus(Hons) natural
trumpet

Richard Thomas BMus, MA, LRAM,
ARAM cornett, natural trumpet

VISITING PROFESSOR OF VIOLA DA GAMBA

Vittorio Ghielmi

STRINGS

Dr Siobhán Armstrong harp

Richard Boothby BMus viola da
gamba

Adrian Butterfield MA, ARCM
historical violin

Bojan Čičić historical violin

Carina Cosgrave historical double
bass

William Hunt MA violone

Frances Kelly harp

Reiko Ichise viola da gamba

Jakob Lindberg ARCM, FRCM lute,
archlute, theorbo and historical guitar

Catherine Martin BA(Hons) (Oxon),
LGSM historical violin, viola d'amore

Sarah McMahon historical cello

Pablo de Pedro Cano historical viola

Catherine Rimer MMus, GRNCM,
ARAM historical viola

Jane Rogers baroque viola

Lucy Russell BA(Hons), MA historical
violin

Dr Sam Stadlen PhD viol consort

Richard Tunnicliffe historical cello,
cello continuo

VISITING PROFESSOR OF RECORDER

Walter van Hauwe

WOODWIND

Lisa Beznosiuk GGSM, HonRCM
historical flute

Rachel Brown BMus, PPRNCM,
GRNCM historical flute

Gail Hennessy historical oboe

Sarah Jeffery contemporary recorder
and recorder consort

Professor Colin Lawson CBE, MA
(Oxon), MA, PhD, DMus, FRCM,
FRNCM, FLCM, HonRAM historical
clarinet

María Martínez Ayerza MMus, MA
recorder and renaissance recorder
consort

Dr Ingrid Pearson BMus(Hons),
Dip Ed, PhD, LTCL, LMusA, SFHEA,
HonRCM historical clarinet

Barnaby Robson AGSM historical
clarinet

Professor Ashley Solomon FRAM,
FRCM, HonRCM recorder

Dr Wouter Verschuren MMus PhD
historical bassoon

KEYBOARD

CHAIR OF INTERNATIONAL KEYBOARD STUDIES, HEAD OF KEYBOARD & ASSOCIATE DIRECTOR FOR PARTNERSHIPS IN ASIA

Professor Vanessa Lata arche FRCM,
HonARAM, FTCL, LRAM, ARCM

DEPUTY HEAD OF KEYBOARD

Ian Jones BMus, ARCM, DipRCM,
FRCM

ASSISTANT HEAD OF KEYBOARD (COLLABORATIVE PIANO)

Simon Lepper MA (Cantab), LRAM,
DipRAM, ARAM

VISITING PROFESSORS OF PIANO

Barry Douglas CBE, FRCM

John Lill CBE, HonDMus, HonDSc,
FRCM, FTCL, FLCM

PIANO

Professor Dmitri Alexeev PGDip
(Moscow Conservatory), FRCM
(Chair of advanced piano)

John Byrne Dip (Moscow
Conservatory), ARCM, ARAM,
DipRAM, GRNCM, PPRNCM

Nigel Clayton BMus, ARCM, FRCM

Danny Driver MA (Cantab), PGDip
(RCM)

Gordon Fergus-Thompson FRCM

Norma Fisher FRNCM

Caterina Grewe BMus, MMus,
ArtDip, Konzertexamen

Sofya Gulyak MPerf RCM,
ArtDipRCM

Julian Jacobson MA, GRSM, ARCM

Ian Jones BMus, ARCM, DipRCM,
FRCM

Dinara Klinton Dip (Moscow
Conservatory), MPerf, ArtDip (RCM)

Ilya Kondratiev MPerf, ArtDip

Jianing Kong BMus, MMus, ArtDip
(RCM)

Professor Vanessa Lata arche FRCM,
HonARAM, FTCL, LRAM, ARCM

For more information on the
Historical Performance Faculty
please see page 48.

Alim Beisembayev assistant professor
Dorian Lejnak BMus (summa cum laude), MA, MMus, MMA, DMA (Yale University)

Leon McCawley BMus (Curtis Institute), ARCM Hons

Mengyang Pan MMus, ArtDip

Dina Parakhina MADip, PGDip, Postgraduate Diploma (Moscow Conservatory), FRCM

Vitaly Pisarenko

Edna Stern Solisten Dip (Basel)

Kathron Sturrock ARCM

Richard Uttley MA (Cantab), MPerf, ArtDip, FHEA

Andrew Zolinsky DipRCM

PRINCE CONSORT PROFESSOR OF COLLABORATIVE PIANO

Roger Vignoles BA, MusB, FRCM, HonRAM

COLLABORATIVE PIANO

Elizabeth Burley ARCM, FRCM (orchestral piano specialist)

Nigel Clayton BMus, ARCM, FRCM

Julian Jacobson MA, GRSM, ARCM

Simon Lepper MA (Cantab), LRAM, DipRAM, ARAM

Kathron Sturrock ARCM

Richard Uttley MA (Cantab), MPerf, ArtDip, FHEA

CONTEMPORARY PIANO (MASTERS ONLY)

Danny Driver MA (Cantab), PG Dip (RCM)

Richard Uttley MA (Cantab), MPerf, ArtDip

Andrew Zolinsky DipRCM contemporary piano coordinator

JAZZ PIANO

(second or related study only)

Michael Moran GRSM Lond, ARCM, HonDMus

ORGAN

Charles Andrews BMus organ coordinator

Martin Ford

David Graham BMus, ARCM, ARCO, FRCM

Martin Schmeding

ORGAN SUPPORTING STUDIES

Andrew McCrea BMus, MMus, ARCM, ARCO academic programmes professor

KEYBOARD TECHNICAL SERVICES

Chris Moulton HonRCM head of keyboard technical services

PERCUSSION

HEAD OF PERCUSSION

David Hockings ARCM, FRCM

TIMPANI

Grahame King ARAM

Chris Ridley BMus, LRAM, ARAM

BAROQUE TIMPANI

Adrian Bending ARAM

PERCUSSION

Andy Barclay DipRCM, HonARAM

Owen Gunnell BMus(Hons)

Alexander Neal GRSM(Hons), DipRCM

Sam Walton BMus(Hons), LRAM, ARAM

JAZZ VIBRAPHONE

Anthony Kerr

DRUM KIT

Ralph Salmins AGSM, FHEA

LATIN PERCUSSION

Will Fry

MARIMBA

Daniella Ganeva LGSM, PGDipGSMD, FISM, FHEA

For more information on the Keyboard Faculty please see page 50.

For information on Historical Keyboard Studies see page 48 or visit www.rcm.ac.uk/hp

For more information on the Percussion Faculty please see page 52.

STRINGS

ACTING HEAD OF STRINGS

Gary Ryan GRSMHons, LRAM, LGSMHons, HonARAM, FRCM

ASSISTANT HEAD OF ORCHESTRAL STRINGS

Gabrielle Lester FHEA, FRCM

LUTHIER SERVICES

Florian Leonhard Fine Violins

CHAMBER MUSIC

Sacconi Quartet
Marmen Quartet
Brodsky Quartet

INTERNATIONAL ARTIST IN RESIDENCE (VIOLIN)

Alina Ibragimova MBE, FRCM

VISITING PROFESSORS OF VIOLIN

Eszter Haffner
Peter Herresthal
Lewis Kaplan BS, MS (Juilliard)
Tasmin Little CBE
Vasko Vassilev
Maxim Vengerov

VIOLIN

Felix Andrievsky Dip and Dip Solo Performance (Gnessin Musical Institute), FRCM

Radu Blidar LMD

Jiafeng Chen BMus, MMus, BMus (RCM), MMus (Juilliard), MSc (RCM)

Michal Cwizewicz DipRCM

Alexander Gilman

Detlef Hahn FGS

Lutsia Ibragimova

Leonid Kerbel Rubin Academy (Tel Aviv)

Gabrielle Lester FHEA, FRCM

Adrian Levine ARAM, FRSA

Natalia Lomeiko BMus

Susie Mészáros ARCM(Hons), ARAM, BA(Hons)

Madeleine Mitchell MMus (Eastman USA), GRSM, ARCM (Perf Hons), ARCM (Teacher's Hons) FRSA, FISM

Itzhak Rashkovsky BMus, MMus, FRCM, HonRCM

Daniel Rowland

Sasha Rozhdestvensky

Ani Schnarch ARCM, Artist DipHons (Buchmann-Mehta School of Music), FRCM

Emily Sun BMus, MPerf, ArtDip (RCM) ArtDip (Chapelle Musicale Reine Elisabeth)

Yuri Zhislin DipHons, ARCM

Yossi Zivoni FRCM, FRNCM

JAZZ VIOLIN AND VIOLA

Christian Garrick ARAM, DipRAM, LRAM BMus(Hons)

INTERNATIONAL ARTIST IN RESIDENCE (VIOLA)

Maxim Rysanov

VISITING PROFESSOR OF VIOLA

Nathan Braude

VIOLA

Jonathan Barritt PPRNCM (Hons), Hon ARAM

Ida Bryhn

Antonello Farulli

Bryony Gibson-Cornish ATCL, BMus(Hons), MMus, ArtDip

Susie Mészáros BA(Hons), ARCM(Hons), ARAM

Simon Rowland-Jones ARCM

Isabel Villanueva

Andriy Viytovych Concert Artists Diploma

Yuri Zhislin DipHons, ARCM

VISITING PROFESSOR OF CELLO

Natalie Clein OBE

Marc Coppey

Gustav Rivinius

Torleif Thedéen

CELLO

Alastair Blayden DipRCM (Perf), DipRCM (Teaching)

Alexander Boyarsky Dip and Dip Solo Performance (Gnessin Musical Institute), HonRCM

Alexander Chaushian

Hélène Dautry

Jakob Kullberg

Richard Lester

Melissa Phelps ARCM, FRCM

Gemma Rosefield

Amanda Truelove ARCM, DipRCM (Perf), Konzertexamen Diplom (Düsseldorf)

Tim Walden

Raphael Wallfisch

WOODWIND

VISITING PROFESSOR OF DOUBLE BASS

Paul Ellison

DOUBLE BASS

Peter Buckoke ARCM, HonRCM

Caroline Emery GTCL, LTCL, CertEd, HonRCM

Rodrigo Moro Martin

Gabriele Raghianti

Enno Senft DipMus (Cologne/Vienna)

VISITING PROFESSORS OF HARP

Stephen Fitzpatrick orchestral training

Marisa Robles consultant

Irina Zingg

HARP

Daphne Boden ARCM, FRCM, HonARAM, Premier Prix (Conservatoire Royal de Bruxelles), FRSA

Jana Boušková

Ieuan Jones ARCM, DipRCM, FRCM

VISITING PROFESSOR OF GUITAR

John Williams AO OBE

GUITAR

Carlos Bonell HonRCM

Gary Ryan GRSMHons, LRAM, LGSMHons, HonARAM, FRCM

Christopher Stell DipRAM, LRAM, ARAM

JAZZ GUITAR

(second or related study only)

Dr Milton Mermikides BMus, BSc, PhD

HEAD OF WOODWIND

Marie Lloyd MA, ARCM(PG), GTCL

VISITING PROFESSOR OF FLUTE

Adam Walker

FLUTE

Katie Bedford BMus(Hons), PGDip (RCM)

Simon Channing BA (Cantab), ARCM, HonRCM, FRCM

Gitte Marcusson

Emer McDonough

Susan Milan ARCM (Hons), FRCM, PGDipGSMD

Sue Thomas DipRAM, BMus, PPRNCM, GRNCM

JAZZ FLUTE

(second or related study only)

Andy Panayi

PICCOLO

(second or related study only)

Stewart McIlwham

Kathleen Stevenson BMus, PGCert (RSAMD), Dip in Orchestral Studies (NCOS)

PRINCE CONSORT PROFESSOR OF OBOE

Jacques Tys

VISITING PROFESSOR OF OBOE

Nick Deutsch

OBOE

John Anderson ARCM, FRCM

Gareth Hulse MA, FRAM, ARCM

Rosie Jenkins BMus, LRAM, PGDip

Juliana Koch

Olivier Stankiewicz MMus

COR ANGLAIS

(second or related study only)

Christine Pendrill

CLARINET

Robert Hill ARCM, ARAM

Janet Hilton FRCM, ARMCM

Richard Hosford ARCM, DipRCM (Perf), FRCM

Timothy Lines ARCM, FRCM, DipRCM

Marie Lloyd MA, ARCM(PG), GTCL

Barnaby Robson AGSM

Peter Sparks MA (Hons) Cantab, PGDip (RAM), LGSM (PPD), LRAM, ARAM

E FLAT CLARINET

(second or related study only)

Timothy Lines ARCM, DipRCM, FRCM

Marie Lloyd MA, ARCM(PG), GTCL

BASS CLARINET

(second or related study only)

Paul Richards GRSM

SAXOPHONE

Kyle Horch BMus, MMus, HonRCM

Martin Robertson ARCM, DipRCM

BASSOON

Joost Bosdijk BMus (Royal Conservatoire, The Hague)

Sarah Burnett MA, DipRAM, LRAM

Andrea de Flammineis

Martin Gatt HonFGSM, ARCM, FRCM

Roberto Giaccaglia Diploma, K.A

Emily Hultmark

CONTRABASSOON

(second or related study only)

Martin Field ARAM

REED MAKING

Joost Bosdijk bassoon

Martin Field contrabassoon

Alice Munday, Oliver Phillips,

Max Spiers oboe and cor anglais

For more information on the Strings Faculty please see page 54.

For information on historical strings studies please see page 48 or visit www.rcm.ac.uk/hp

For more information on the Woodwind Faculty please see page 56.

For information on historical woodwind studies please see page 48 or visit www.rcm.ac.uk/hp

VOCAL & OPERA

HEAD OF VOCAL & OPERA

Nicholas Sears MA (Cantab), FRCM

DEPUTY HEAD OF VOCAL & OPERA

Audrey Hyland BA, HonARAM

ARTIST IN RESIDENCE

Sir Thomas Allen CBE FRCM

CHAIR OF VOCAL PERFORMANCE

Professor Janis Kelly FRCM, DRSAM

VISITING PROFESSORS OF VOCAL & OPERA

Brindley Sherratt

Nicky Spence OBE

Edith Wiens OC

VOCAL STUDIES

Patricia Bardon

Graeme Broadbent DipRCM (T/Op/PG/Perf), DipPG (Moscow Conservatory)

Sally Burgess ARCM, FRCM

Dame Sarah Connolly DBE

Roderick Earle MA

Tim Evans-Jones ARAM, FRCM

Dinah Harris ARAM, FRCM

Ben Johnson BMus, PGDip Opera (Adv)

Justin Lavender AGSM

Jonathan Lemalu Arts Dip (RCM), PG Cert (GSMD), LLB (Otago), FRCM, ONZM

Rosa Mannion BA

Amanda Roocroft FRNCM, FUCLAN, HonDA, GRNCM, PGRNCM

Patricia Rozario OBE, BA, AGSM, FRCM

Peter Savidge MA

Russell Smythe FRCM, AGSM

Jeffrey Stewart AGSM

Mark Tucker MA, DipGSM

Sarah Tynan FRAM, DipRAM (Opera), LRAM

Veronica Veysey Campbell FTCL, LTCL, Cert of Advanced Studies (GSMD)

Miranda Wright

REPERTOIRE CLASSES

Sally Burgess ARCM, FRCM performance class

Patrizia Dina BA Italian song

Audrey Hyland BA, HonARAM French mélodie and Lieder

Richard Jackson MA Lieder and French mélodie

Jonathan Peter Kenny historical performance classes

Norbert Meyn FHEA, LGSM, Diplom Gesang Solo (HfM) Lieder FRCM

Andrew Robinson DipRCM, Lieder and French mélodie

Patricia Rozario OBE, BA, AGSM, FRCM English song and oratorio

Nicholas Sears MA (Cantab), FRCM French mélodie

Stephen Varcoe MA, PhD English song

Roger Vignoles BA, MusB, FRCM, HonRAM song repertoire and duos

SPEECH AND LANGUAGE CLASSES

Patrizia Dina BA Italian

Matteo Dalle Frate Italian

Christine Legge speech

Johanna Mayr MagPhil, DipTrans, MCIL German

Norbert Meyn FHEA, LGSM, Diplom Gesang Solo (HfM) Lieder German

Sonja Nerdrum HonRCM French

Hildburg Williams German

Sebastian Wybrew French

VOCAL REPERTOIRE COACHING

Caroline Dowdle LRSM, BMus, PPRNCM

Simon Lepper MA(Cantab), LRAM, DipRAM, ARAM

Gary Matthewman BMus(Hons), PGDip (RCM)

Michael Pandya

Joseph Ramadan

Andrew Robinson DipRCM

Dr Stephen Varcoe MA, PhD

Roger Vignoles BA, MusB, FRCM, HonRCM

Sebastian Wybrew

OPERA COACHING

Nicholas Bosworth

Nicholas Cleobury

Alec Crowe

Caroline Dowdle

Bryan Evans

Joyce Fieldsend

Antony Kraus

Natalie Murray Beale

Michael Pollock MA (Oxon), MMus (London), ARCM, HonRAM, FRWCMD

Carmen Santoro

Peter Selwyn

Stuart Wild

ART SONG

Audrey Hyland BA, HonARAM

Roger Vignoles BA, MusB, ARCM, FRCM, HonRCM

MOVEMENT

Desirée Kongerød

STAGECRAFT AND ACTING

Saffron van Zwanenberg

For more information on the Vocal & Opera Faculty please see page 58.

RCM OPERA STUDIO

DIRECTOR OF OPERA

Michael Rosewell FRCM

VISITING PROFESSOR OF OPERA

Dame Kiri Te Kanawa DBE, HonDMus

OPERATIC REPERTOIRE COACHES

Caroline Dowdle LRSM, BMus, PPRNCM

Joyce Fieldsend

Anthony Legge

SONG COACHES

Audrey Hyland BA, HonARAM

Simon Lepper MA(Cantab), LRAM, DipRAM, ARAM

Roger Vignoles BA, MusB, ARCM, FRCM, HonRCM

MUSIC STAFF

Nicholas Bosworth

Nicholas Cleobury

Alec Crowe

Caroline Dowdle

Bryan Evans MBE

Joyce Fieldsend

Lionel Friend

David Gowland

Richard Hetherington

Anthony Kraus

Natalie Murray Beale

Michael Pollock MA (Oxon), MMus (London), ARCM, HonRAM, FRWCMD

Peter Robinson

Peter Selwyn

Jonathan Swinard

Stuart Wild

MOVEMENT

Kate Flatt OBE

ACADEMIC PROFESSORS

DIRECTOR OF PROGRAMMES

Dr Diana Salazar BA, MMus, PhD

BMUS PROGRAMME COORDINATOR

Dr Ann van Allen-Russell PhD, FHEA

PROFESSOR OF MUSIC AND HEAD OF POSTGRADUATE TAUGHT PROGRAMMES

Professor Mark Bowden BMus, MMus, PhD, PGCE, FHEA

HEAD OF RESEARCH AND PROFESSOR OF MUSICOLOGY

Professor Robert Adlington BA, MA, DPhil, FHEA

ALEXANDER TECHNIQUE

Peter Buckoke HonRCM, MSTAT (area leader)

Catherine Fleming

Judith Kleinman AGSM, MSTAT

Bethan Pugh MSTAT

Fuensanta Zambrana-Ruiz

AURAL

Miranda Francis ARAM, MA, LRAM, ARCM, PGCE (area leader)

Dr Haris Kittos BA, MMus, DMus

Andrew McCrea BMus, MMus, ARCM, ARCO

Dr Jonathan Pitkin MA(Oxon), MMus, DMus (RCM)

Dr Paul Robinson BMus, MA, DPhil, FHEA

Dr Jane Roper MMus, PhD

Gary Ryan GRSMHons, HonARAM, LRAM, LGSMHons, FRCM

Dr Imma Setiadi PhD

Dr Pande Shahov BMus, PGDip, PhD

Shirley Smart

Dr Gareth Wilson BMus, DipPGPerfRAM, DipRAM, MA, PGCert, ARAMM, PhD

For more information on the RCM Opera Studio please see page 60.

COMPOSITION AND CONTEMPORARY MUSIC STUDIES

Professor Mark Bowden BMus, MMus, PhD, PGCE, FHEA

Dr Ed Bennett BA(Hons), MMus, PhD

Dr Jonathan Cole MMus, PhD, FRCM (Head of Composition)

Dr Gerardo Gozzi

Dr Deirdre Gribbin PhD, Fulbright Fellow, Churchill Fellow

Kenneth Hesketh MMus (Ann Arbor), ARCM (PG), DipRCM

Dr Edwin Hillier, MMus Dmus

Michael Hyman

Dr Alison Kay BA(Hons), ARCM, MMus, DPhil

Dr Haris Kittos BA, MMus, DMus

Mike Ladouceur BMus, MMus

Dr Neil Luck

William Mival

Dr Jonathan Pitkin MA (Oxon), MMus, DMus (RCM)

Dr Dimitri Scarlato DMus

Enrica Sciandrone MMus, MA (musicology), MA (composition and piano)

Filip Sijanec, BA, MA

Kate Simko MMus

Dr Mark-Anthony Turnage CBE FRCM

Tim Watts, MA (Cantab), MMus (GSMD)

CONDUCTING

Toby Purser MA, DipPerf RAM, ARAM (Head of Conducting)

Natalia Luis-Bassa BMus, PGDip, MMus

Peter Stark HonDMus, HonFTCL, HonARAM, GRSM, ARCM

Howard Williams BMus, MA, HonARAM

MUSICIANSHIP AND IMPROVISATION

Mark Armstrong

Professor Mark Bowden BMus, MMus, PhD, PGCE, FHEA

Dr Oliver Chandler PhD

Dr Gerardo Gozzi MComp, PhD, FHEA (area leader)

Tim Watts MA (Cantab), MMus (GSMD)

Andrew McCrea BMus, MMus, ARCM, ARCO

Dr Paul Robinson BMus, MA, DPhil, FHEA

Shirley Smart

Dr Gareth Wilson BMus, DipPGPerfRAM, DipRAM, MA, PGCert, ARAMM, PhD

ENGLISH LANGUAGE SUPPORT

Vanessa Chia-Wei Chen

ENTERPRISE AND INNOVATION

Dr George Waddell BMus, MMus, PhD, ARCT

Diana Roberts

HISTORICAL STUDIES

Dr Ann van Allen-Russell PhD, FHEA

Professor Mark Bowden BMus, MMus, PhD, GCE, FHEA

Dr Carola Darwin MA (Cantab), MMus (Perf), PhD

Dr Sarah Fuchs (area leader)

Dr Caroline Gill

Dr Gerardo Gozzi MComp, PhD, FHEA

Dr Christina Guillaumier MMus (Lond), MSc (Oxon), PhD, FLCM

Ivan Hewett MA Oxon

Dr Maiko Kawabata

Andrew McCrea BMus, MMus, ARCM, ARCO

Dr Ingrid Pearson BMus(Hons), Dip Ed, PhD, LTCL, LMusA, SFHEA, HonRCM

Dr Paul Robinson BMus, MA, DPhil, FHEA

Professor Gabriele Rossi Rognoni BA, MA, Dott. abil., HonRCM

Dr Jane Roper MMus, PhD

Tim Watts MA (Cantab), MMus (GSMD)

MUSIC EDUCATION

Dr David Camlin BA(Hons), DProf, PGCE

Dr Tania Lisboa LMus, ArtDip, MA, PhD, HonRCM

Mary Pells MA, LRAM, FHEA

Dr Jessica Pitt BSc (Hons), PGCE(NL), PhD, DipMusEd

Dr Mary Stakelum BEd(Hons), BMus(Hons), MA, PhD, PGCert (Kodály/Liszt Academy), SFHEA (area leader)

MUSIC TECHNOLOGY AND DIGITAL MUSICIANSHIP

Nicholas Moroz BMus MMus MSt (Oxon)

Thom Gilbert

PERFORMANCE SCIENCE

Dr Tania Lisboa LMus, ArtDip, MA, PhD, HonRCM

Professor Rosie Perkins BMus, MA, PhD, FHEA, FRSPH, HonRCM

Dr Anna Détári BMus MMus MSc PhD (MSc Programme Leader)

Dr Neta Spiro BA, MSc, PhD

Dr George Waddell BMus, MMus, PhD, ARCT (area leader)

Professor Aaron Williamon BA, BSc, PhD, FHEA, FRSA, HonRCM (Head of Centre for Performance Science)



74 **UNDERGRADUATE PROGRAMME** 76 **MASTERS PROGRAMMES**
80 **ARTIST DIPLOMAS** 82 **RESEARCH PROGRAMMES**

www.rcm.ac.uk/courses

PROGRAMMES OF STUDY

UNDERGRADUATE PROGRAMME

At the heart of our world-leading BMus(Hons) programme is a heritage conservatoire experience infused with cutting-edge approaches to music-making and learning, developing creative and informed individuals ready for the ever-changing music industry. You will receive rigorous artistic training from renowned professionals in the field, in a supportive learning environment encouraging intellectual exploration. We are proud of what we do, and in every graduate that represents us.

Dr Ann van Allen-Russell, BMus Programme Coordinator

BACHELOR OF MUSIC – BMUS(HONS)

The BMus(Hons) programme is a flexible four-year degree that combines a focus on principal study with faculty activities and a wide range of core and optional courses as we help you to fulfil your potential. The programme design enables you to shape the degree to your aspirations and bring in a range of modules as your own interests and strengths develop.

PRINCIPAL STUDY

You will have weekly individual lessons with your principal study faculty professor. Second study tuition in a different principal study area is offered to suitable applicants (auditions are held when you begin your studies). Students with an exceptionally high level of ability in two areas may follow joint principal studies. We also offer opportunities to study instruments related to your principal study (e.g. jazz trumpet for trumpeters, baroque flute for flautists).

A WIDE-RANGING PROGRAMME

In addition to your principal study in performance or composition, you will also take on a rigorous curriculum that covers core studies in aural, musicianship, music leadership and education, as well as entrepreneurship, innovation, health and wellbeing and digital skills. Historical, stylistic and analytical studies are underpinned by research-led teaching and student-driven projects. In the third and fourth years of the programme, you will have the opportunity to focus on specialist areas of interest as you prepare for a career in music and to boost your employability as a musician. You can find a full list of modules currently available on the BMus(Hons) programme at www.rcm.ac.uk/courses

HOW WE TEACH

Our teaching is a combination of one-to-one principal study tuition, small group tutorials, customised supervision sessions with academic professors, and group and collaborative work with your peers. Many modules involve placements that give you experience in industry or education. Innovative digital technology supports our teaching and your learning in all areas. These different forms of engagement enable you to develop versatile skills in communication and collaboration.

FIND OUT MORE

www.rcm.ac.uk/undergraduate

• I FEEL SO LUCKY TO BE PART OF SUCH A WARM AND SUPPORTIVE COMMUNITY AT THE RCM. I HAVE GROWN AS A MUSICIAN MORE THAN I THOUGHT POSSIBLE THANKS TO THE PROFESSORS, WHO GO ABOVE AND BEYOND.

Emily Crook, Bachelor of Music (Hons)

BENEFITS OF THE BMUS(HONS)

The RCM makes it a priority to provide a varied and fulfilling undergraduate experience, with your health and wellbeing paramount. When you start your degree programme you immediately become part of a vibrant performing and intellectual community of world-class practitioners and educators. The contacts you create here and the training and knowledge you will receive across all areas of your programme will be of lasting value to you throughout your career.

The versatility of the BMus(Hons) programme helps our students develop the confidence to build successful portfolio careers. Many graduates choose to balance professional performer or composer roles with further study or taking up careers in arts and cultural management, teaching and other related careers.



MASTERS PROGRAMMES

A Royal College of Music Masters degree will prepare you for life as a professional musical artist. Through our programmes, you will work with world-leading musicians to develop your own performance or composition practice at the highest international level. Flexible courses will support your emerging career through rigorous practical training, innovative professional development opportunities, and a stimulating research culture.

Professor Mark Bowden, Head of Postgraduate Programmes



WE OFFER THE FOLLOWING PROGRAMMES:

- Master of Performance: MPerf
- Master of Composition: MComp
- Master of Music in Performance: MMus (Perf)
- Master of Music in Composition: MMus (Comp)
- Master of Music Education Teaching Musician: MMusEd
- Master of Performance Science: MSc

PERFORMANCE MASTERS

- Master of Performance: MPerf
- Master of Music in Performance: MMus (Perf)

The RCM's performance-based Masters courses offer bespoke programmes of study providing the support, training and knowledge needed for the working world of music.

Your education is delivered by our distinguished and experienced team of professors. Alongside activities such as masterclasses, orchestral projects and workshops inside the College, you will have opportunities to experience the world of professional music and research, including side-by-side sit-in schemes with London-based orchestras, commissions, external concerts, tours and talks. You will also participate in faculty-based classes and activities.

Your programme will be complemented by a wide range of options including chamber music, orchestral performance, digital skills, teaching skills, historical performance, conducting, composition, orchestration, musicians' health and wellbeing, women in music and the psychology of performance.

• IN THE WARM AND FRIENDLY ATMOSPHERE OF THE RCM, I'VE ALWAYS FELT HAPPY, HAD OPPORTUNITIES FOR CREATIVE DEVELOPMENT AND FOUND IMMENSE SUPPORT •

Maria Filippova, Master of Performance

COMPOSITION MASTERS

- Master of Composition: MComp
- Master of Music in Composition: MMus (Comp)

Composition-based Masters courses aim to help you develop your compositional practice through a range of intensive training and performance opportunities. Your studies will be complemented by options that reflect current vocational and professional needs. Such skills are particularly relevant for those who aim to enter the profession as practitioners at the highest level and who need to meet the current demands of the music industry.

Composition at the RCM fosters partnerships with the College's numerous gifted instrumentalists. Composers will hear performances of their own works in a variety of contexts and benefit from a range of collaborations, which we host regularly with artistic organisations in London and beyond.

COMPOSITION FOR SCREEN

Our specialist Composition for Screen pathway enables students to develop advanced skills in composition for screen, including film, TV and online games. Underpinned by current industry practices, students develop their technical expertise, compositional versatility and professional connections.

For further details, visit www.rcm.ac.uk/compforscreen

WHICH MASTERS PROGRAMME IS FOR ME?

The MPerf and MComp programmes provide concentrated training to advanced musicians preparing to enter the profession. The MMus programme develops your critical and research skills alongside your training as a performer or composer. This programme is ideal preparation for those who are interested in doctoral research or high-level teaching within the music profession.

Both programmes offer modules on career development as well as access to a full range of resources provided by our Creative Careers Centre to ensure you are fully prepared for your professional future.

Image opposite

Star soprano Angela Gheorghiu takes one of her masterclasses at the Royal College of Music

FIND OUT MORE

www.rcm.ac.uk/postgraduate



MASTER OF MUSIC EDUCATION TEACHING MUSICIAN (MMusEd)

The RCM MMusEd Teaching Musician is a taught degree programme designed for aspiring music educators that aims to equip students with the skills and knowledge required for a successful professional career as a teaching musician.

This course offers a unique blend of practical training in performance or composition, vocational training in music education skills and theoretical knowledge of teaching and learning, equipping students with the expertise to succeed in a range of music education settings.

For more details visit www.rcm.ac.uk/med

THE CENTRE FOR PERFORMANCE SCIENCE IS A TRUE JEWEL IN THE CROWN OF THE RCM'S MANY DISTINGUISHED DEPARTMENTS. IT'S A PRIVILEGE TO WORK WITH THIS INTERNATIONALLY RESPECTED TEAM IN RESEARCHING AND SUPPORTING BOTH PERFORMANCE EXCELLENCE AND THE HEALTH AND WELLBEING OF ITS MUSICIANS.

William Kidner, Master of Performance



MSc IN PERFORMANCE SCIENCE

The MSc programme is taught by the prestigious Centre for Performance Science, a dynamic partnership between the RCM and Imperial College London. It provides the opportunity to undertake in-depth research in the art and science of performance in a real-world educational and professional context. This research-based course delivers a scientific understanding of how music is performed, taught, created and perceived.

The MSc can prepare you for a future career, including doctoral research and/or teaching, in performance science, arts-in-health, music psychology or musicians' wellbeing, or in any area in which knowledge of psychology and social scientific methods would be an advantage.

For more details visit www.rcm.ac.uk/msc

OTHER AWARDS

The Postgraduate Diploma (PGDip) can be awarded to students who have completed 120 credits of a Masters programme.

The Graduate Diploma in Vocal Performance is available to vocal students as a bridge to postgraduate study.

FLEXIBILITY

Allowing you to study in a way that suits you is important to us. Most Masters programmes are also available part-time and selected programmes are available in a 12-month, intensive format, subject to approval. International students should note that full-time study is required on a student visa.

Image opposite

RCM Masters students performing with the RCM Symphony Orchestra conducted by Sir Antonio Pappano

FIND OUT MORE

www.rcm.ac.uk/postgraduate

ARTIST DIPLOMAS

The Artist Diploma is designed for students who want to delve deeply into their own practice before entering the music profession. It represents the highest level of taught postgraduate study, allowing you to hone your skills and develop artistically. The Artist Diploma is delivered through one-to-one teaching and practical projects tailored to your career aspirations.

Professor Mark Bowden
Head of Postgraduate Programmes

The RCM offers Artist Diplomas in Opera, Composition and Performance.

ARTIST DIPLOMA IN OPERA

The Artist Diploma in Opera is based in the RCM Opera Studio. It is designed for students who have the potential to become professional operatic singers. The programme provides you with extensive individual and class provision, as well as performance opportunities in operatic scenes and fully staged productions.

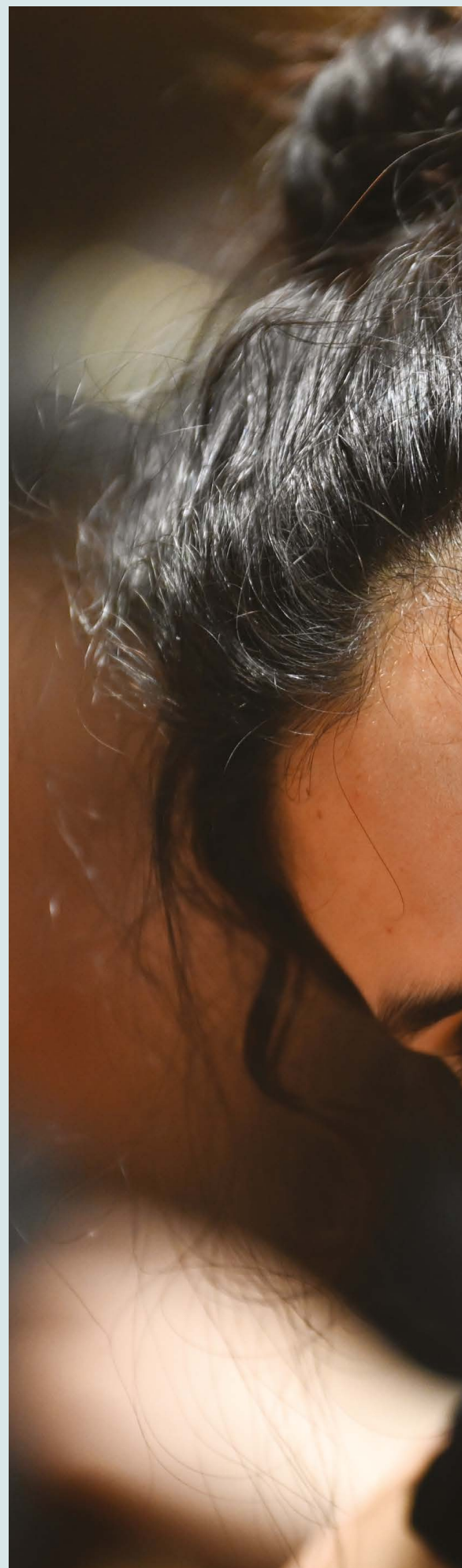
ARTIST DIPLOMA IN PERFORMANCE

The Artist Diploma in Performance is for students who wish to work intensively on solo performance as a prelude to entering the music profession. It allows time for preparation of concerts, recitals and competitions.

ARTIST DIPLOMA IN COMPOSITION

The Artist Diploma in Composition is designed for students who want to work intensively on the technique and practice of composition. It provides time for concentrated study with a principal study composition teacher or teachers and enables sustained focus on one or more specific projects leading to a final portfolio submission.

FIND OUT MORE
www.rcm.ac.uk/artdip





RESEARCH DEGREES

The Royal College of Music offers an outstanding environment for doctoral study, combining supervision from world-leading experts, a vibrant postgraduate research culture, and an inclusive and welcoming ethos.

Professor Robert Adlington, Head of Research

As a doctoral student you will devise and undertake an original research project, supported by a team of experienced academics, including practical supervision if relevant to your thesis. Your independent work is supplemented with ongoing research training and preparation for your future career.

DOCTOR OF MUSIC (DMUS)

The Doctor of Music (DMus) research degree is for outstanding performers and composers who wish to explore research questions arising directly from their artistic practice. You will submit a substantial portfolio of practical work in performance or composition, supplemented by an extended commentary.

DOCTOR OF PHILOSOPHY (PHD)

The Doctor of Philosophy (PhD) research degree focuses on musicological and scientific approaches to questions arising out of performance and composition. You will submit a written dissertation, which may include supporting practical work.

It is possible during the degree to move between PhD and DMus depending on how your individual research project evolves.

FIND OUT MORE

www.rcm.ac.uk/researchdegrees



• THE RCM'S RESEARCH STAFF ARE FIRST-CLASS EXPERTS IN THEIR OWN FIELD. IT'S AMAZING TO BE ABLE TO WORK IN PERSON WITH WORLD-RENOWNED SCHOLARS AND PERFORMERS. •

Tal Walker, doctoral student





86 **APPLYING & AUDITIONS** 88 **HOW TO GET IN TOUCH**
89 **VISIT US** 90 **FEES & FUNDING**

www.rcm.ac.uk/apply

HOW TO APPLY

APPLYING & AUDITIONS

This section takes you through what you need to think about when applying to the Royal College of Music. Full information is available at www.rcm.ac.uk/apply

01

EXPERIENCE AN OPEN DAY

Find out what RCM life is like during our annual Open Day. For more information see www.rcm.ac.uk/openday

02

CHECK THE APPLICATION DEADLINE

The conservatoire recruitment cycle is different to universities, so you will need to apply much earlier; applications for entry in September 2025 will open on 10 July 2024. The closing date for auditions in London for performance and composition courses is 2 October 2024. The closing date for our overseas audition venues and some postgraduate courses vary. For up-to-date details visit www.rcm.ac.uk/auditionlocations

03

CHECK THE ENTRY REQUIREMENTS

Full details of our entry requirements are available online on our individual course pages at www.rcm.ac.uk/courses. If your first language is not English, you must also be able to achieve a satisfactory standard in an approved English test.

04

APPLY

In most cases applications to study at the Royal College of Music should be made online through the UCAS Conservatoires application service at www.ucas.com/conservatoires. For Doctoral studies you must apply directly to the Royal College of Music. For full details visit www.rcm.ac.uk/doctoral

05

PAY YOUR APPLICATION AND ASSESSMENT FEES

Application and assessment fees must be paid when making your online application. These cover the cost of administering your audition, portfolio assessment or interview, and are non-refundable.

Assessment fees for most programmes range from £50–£115 depending on your audition location/method and degree programme; the assessment fee for joint principal study is £165. Applications made via UCAS Conservatoires incur an additional £28.50 application fee. Fees are correct at the time of going to print. The most up-to-date information on assessment fees can be found on our website at www.rcm.ac.uk/auditionlocations

Audition fee waivers are available for UK applicants to the BMus course from low-income backgrounds. For more information visit www.rcm.ac.uk/bmus

06

PREPARE FOR YOUR AUDITION*

The Royal College of Music holds auditions in London and several overseas venues. You can find out more at www.rcm.ac.uk/auditionlocations

London auditions take place from mid-November to early December, although a small number of auditions may be held in February if places are still available.

Applicants who are unable to attend auditions in person can submit a video audition.

The RCM issues a list of prescribed audition pieces, which can be found under the relevant faculty on our website at www.rcm.ac.uk/faculties. Performers may also be asked to undertake a short sight-reading exercise, and in some cases asked to play scales, arpeggios or other technical exercises. Composers are considered for entry primarily on the basis of their portfolio of compositions, and only shortlisted applicants are invited for interview.

*Audition dates and venues correct at time of publication but may be subject to change. See www.rcm.ac.uk/auditions for the latest information.

07

ATTEND YOUR AUDITION

Most auditions and interviews last approximately 15–20 minutes. All those auditioning will be given 15–20 minutes to warm up, and there is no theory test. If you audition in London, for some instruments and for voice you may be asked to perform at a second audition on the same day. An accompanist will be provided for candidates auditioning in London, unless you wish to bring your own.



WATCH

www.rcm.ac.uk/watchaudition

08

AUDITIONS BY RECORDING

Whilst it is preferable to audition live where possible, if you are unable to attend an audition venue in person, the option of auditioning by video recording will be available.

Any student who auditions in person or by video for a place on a performance or composition programme beginning in September 2025 will automatically be considered for a scholarship or study award.

If you wish to be auditioned by recording you must submit both your application and recording by the relevant deadline. For more details see www.rcm.ac.uk/auditionsbyrecording

09

RESPOND TO YOUR OFFER

Offers are made to successful applicants through UCAS Conservatoires, along with details of any conditions that must be met. The RCM aims to inform applicants of their result as soon after the audition period as possible. Successful applicants who have accepted offers of places will receive further details about consultation lessons, choosing a professor, registration and orientation.

USEFUL CONTACT DETAILS

UCAS Conservatoires applicant helpline

0371 468 0470

+44 (0)330 333 0232 (overseas)

RCM Admissions

+44 (0)20 7591 4362

admissions@rcm.ac.uk

www.rcm.ac.uk/auditions

CONTACT US

If you would like to contact us to discuss applying to the Royal College of Music, please feel free to contact our friendly Admissions team who will be happy to advise you.

RCM ADMISSIONS

Email: admissions@rcm.ac.uk

Telephone: +44 (0)20 7591 4362

INTERNATIONAL APPLICANTS

International students interested in applying to study at the Royal College of Music can find out more at www.rcm.ac.uk/international

We also have dedicated webpages for the following countries:

www.rcm.ac.uk/china

www.rcm.ac.uk/hongkong

www.rcm.ac.uk/japan

www.rcm.ac.uk/singapore

www.rcm.ac.uk/southkorea

www.rcm.ac.uk/usa

APPLICANTS WITH DISABILITIES

The RCM welcomes applications from students with disabilities. If you would like to discuss your particular needs in confidence, you are welcome to contact our Student Services team at studentservices@rcm.ac.uk

SOCIAL MEDIA

You can find out more about life at the RCM, our students, alumni and events by following us on social media:

 [royalcollegeofmusic](https://www.facebook.com/royalcollegeofmusic)

 [@RCMLondon](https://twitter.com/RCMLondon)

 [@RCMLondon](https://www.youtube.com/RCMLondon)

 [@RCMLondon](https://www.instagram.com/RCMLondon)



VISIT US

Our prospectus and website will tell you everything you need to know about studying at the RCM, but the best way to discover what life is like here is to visit us.

OPEN DAY

Our Open Day takes place each spring and is designed to give prospective students, parents and teachers the chance to explore what the College has to offer. With performances, faculty introductions and informative sessions, it's a great way to discover life at the RCM. For more information see www.rcm.ac.uk/openday

EVENTS

Our events feature the world-class talents of our students and staff as well as regular visits from internationally renowned artists. To ensure our events are accessible to all audience members, many events use a 'Pay What You Can' ticket model, allowing visitors to choose a ticket price that works for them, including a free option. Other events start from as little as £5. Ticket money goes towards supporting students' music-making. Find out more at www.rcm.ac.uk/events

EXPLORE ONLINE

If visiting is not possible before making an application, our website contains full application information and course breakdowns, and our YouTube channel is home to videos from all our faculties and our performance archive. You can also explore our series of interactive digital exhibitions from the RCM's historic collections at www.rcm.ac.uk/exhibitions

You can watch our campus tour video at www.rcm.ac.uk/watchcampustour



WATCH
www.youtube.com/RCMLondon

FIND OUT MORE
www.rcm.ac.uk/visit

FEES & FUNDING

The Royal College of Music can offer you a range of support to help you to finance your studies at our world-class conservatoire.

TUITION FEES AND FEE STATUS

Whether students pay the Home or Overseas tuition fee depends on a number of factors, including nationality and country of residence. Find out more about the fee regulations for England at www.rcm.ac.uk/feestatus

Tuition fees are revised annually so please check www.rcm.ac.uk/fees for the latest information and an up-to-date full list of fees for all programmes. As a guide, annual fees for 2024/25 were:

Courses	Home	Overseas
BMus(Hons)	£9,250	£29,200
Graduate Diploma in Vocal Performance	£14,100	£30,600
MPerf/MComp/MMus	£14,100	£30,600
MPerf/MMus in Vocal Performance	£17,450	£30,600
MMus Perf/MMus Comp (12 month fast-track)	£17,450	£37,500
MEd*/MSc*	£8,250	£20,300
ArtDip in Composition/ Performance	£13,650	£29,900
ArtDip in Opera	£15,900	£30,600
DMus/PhD	£8,250	£20,300

*charged pro-rata, based on credits

NON-UK STUDENTS

It is essential that you have the means to pay your fees and living expenses for the duration of your course before leaving your own country. Most students need to budget at least £12,500 per year for living costs. If you require a Student visa to study in the UK, you will need to demonstrate that you have at least £12,006** to cover living expenses for the first year of your course.

**Information correct at time of publication

SCHOLARSHIPS AND BURSARIES

RCM scholarships are available to students on our performance and composition courses, with more than 50% of current students receiving some financial support. A small number of grants are also available to help with unexpected study costs throughout the year.

Bursaries are offered to assist with the cost of Doctoral studies, and details of how to apply will be sent to successful applicants. At present there are no scholarships available for the MSc programme. For more details see www.rcm.ac.uk/scholarships

LOANS AND GRANTS

Student loans are available to England-domiciled UK students on the BMus(Hons), Masters and Doctoral programmes, and also to some eligible EU students who benefit from protected rights under the EU Withdrawal Agreement. For further details visit www.gov.uk/student-finance. Separate arrangements apply to students from Wales, Scotland and Northern Ireland.

The RCM is designated as an eligible institution for American students to apply for US Federal Student Loans or for deferment of payment on an existing US student loan. For more detailed information visit www.rcm.ac.uk/usloans

There may be access to grants and awards in your home country for study abroad. Consult your local British Council representative for details.

OTHER SOURCES OF FINANCIAL ASSISTANCE

You can find guidance on funding and scholarships at the RCM at www.rcm.ac.uk/funding including advice for UK and overseas students, a list of key external funding organisations and helpful tips on how to approach them.

PROFESSIONAL OPPORTUNITIES FOR STUDENTS

Once at the RCM you will have access to our Creative Careers Centre, where a dedicated team offers a wide range of free services, from help with filling in application forms to finding paid employment.

FIND OUT MORE
www.rcm.ac.uk/funding

Every effort has been made to ensure that the information here is fair and accurate at the time of publication. Information on programmes, fees and services contained within this publication are subject to occasional changes, and no guarantee can be given that these will not be made following publication.

For the most up-to-date information on our programmes visit www.rcm.ac.uk

Any complaints concerning the fairness or accuracy of this publication should be addressed to prospectus@rcm.ac.uk

© Royal College of Music 2024

Photo credits

James Mason:
Cover image

Sussie Ahlburg:
Page 19

David Burden:
Page 19

Chris Christodoulou:
Pages 3, 4, 10, 11, 13, 16, 18, 31,
40, 47, 48, 50, 57, 58, 61, 76,
80–81

Olivia da Costa:
Page 20

Nathan Eaton-Baudains:
Page 20

Leo Fotos:
Page 21

Luane Hubert:
Page 36

Tatiana Hunter:
Page 21

Christina Kernohan:
Page 19

Kaupo Kikkas:
Page 20

Nabin Maharjan:
Page 21

Jana Marie Knotová:
Page 21

Phil Rowley:
Pages 6–7, 9, 23, 24–25, 26, 27, 29, 32,
33, 34, 35, 38–39, 49, 53, 54, 55, 59,
62, 72, 75, 78, 79, 82–83, 84, 88, 89

Geoffroy Schied:
Page 19

Jonny Vaux:
Page 21

Catherine Zeng:
Page 15

Design
studioparallel.co.uk

Designer
Janine Clayton

Editor
Kathleen Quirke
Joanna Wyld

Assistant Editor
Erin McKenna




Printed by Park Lane Press on FSC® certified paper, using fully sustainable, vegetable oil-based inks, power from 100% renewable resources and waterless printing technology. Print production systems registered to ISO 14001, ISO 9001 and over 97% of waste is recycled.

Prince Consort Road
London SW7 2BS
United Kingdom

+44 (0)20 7591 4300
info@rcm.ac.uk

www.rcm.ac.uk

 [royalcollegeofmusic](https://www.facebook.com/royalcollegeofmusic)

 [@RCMLondon](https://twitter.com/RCMLondon)

 [@RCMLondon](https://www.youtube.com/@RCMLondon)

 [@RCMLondon](https://www.instagram.com/RCMLondon)

President

The former Prince of Wales

Chairman

Lord Black of Brentwood

Director

Professor Colin Lawson
CBE, MA (Oxon), MA, PhD,
DMus, FRCM, FRNCM,
FLCM, HonRAM

Cover photo student

Isabel Garcia, Bachelor of
Music (Hons)

The Royal College of Music
is a registered charity.
No. 309268



Apply to the RCM



**GLOBAL
NO. 1**

MUSIC & PERFORMING ARTS

QS WORLD UNIVERSITY RANKINGS 2024/2023/2022